



**PARKWAY** SCHOOLS

HIGHER EXPECTATIONS. BRIGHTER FUTURES.

# Financial Statements

*Date: March 2019*

PARKWAY SCHOOL DISTRICT  
MONTHLY FINANCIAL REPORT  
TABLE OF CONTENT

<u>DOCUMENT</u>	<u>PAGE</u>
EXECUTIVE SUMMARY. . . . .	1 - 2
GRAPHS - REVENUE, EXPENDITURE, CASH, AND FUND BALANCE .	3 - 5
RECAPITULATION OF FUNDS . . . . .	6
ACCRUAL BALANCE SHEET. . . . .	7
BREAKOUT OF CASH AND INVESTMENTS . . . . .	8
MODIFIED ACCRUAL REVENUE SCHEDULE . . . . .	9
EXPENDITURE SUMMARY BY OBJECT . . . . .	10
FOOD SERVICE INCOME AND EXPENSE . . . . .	11
EXPENDITURE SUMMARY BY BUILDING . . . . .	12
EXPENDITURE SUMMARY BY PROGRAM . . . . .	13 - 15
GLOSSARY . . . . .	16 - 17
PURCHASING REPORTS . . . . .	18 - 36



TO: Board of Education

DATE: May 8, 2019

FROM: Patricia Bedborough, CPA

RE: Executive Summary March 2019

#### Abstract

The March financial reports are attached. The revenues received are ahead of the collection from last year. We have also received our taxes paid under protest amount. The good news that our taxes paid under protest for 2018 decreased to \$28,032,642 from last year's \$44,861,283. With this is some bad news as well. Our amount that has been settled from past protests has increased by 30% from prior year. This will most likely result in a lower collection rate than budgeted. Following a meeting with the county, we were also told that many current taxpayers are delinquent in their payments. We will keep you posted as we know more about this situation. We have collected \$2.4 million greater than budgeted for Financial Institution Tax. This will offset the impending lower revenue from our tax payers. One additional line item of note is the increase of interest income. We project that we will receive about \$1 million in operating funds this year. The expenditures are slightly above the operating expenses from last year; however, we are in line with the budget spending. A portion to this is from payroll expenses include a payout of approximately \$400,000 for retirees from last year that selected a payout. All financials have the revised budget included.

#### Future Issues

The following issues are still pending and could affect district finances in the future:

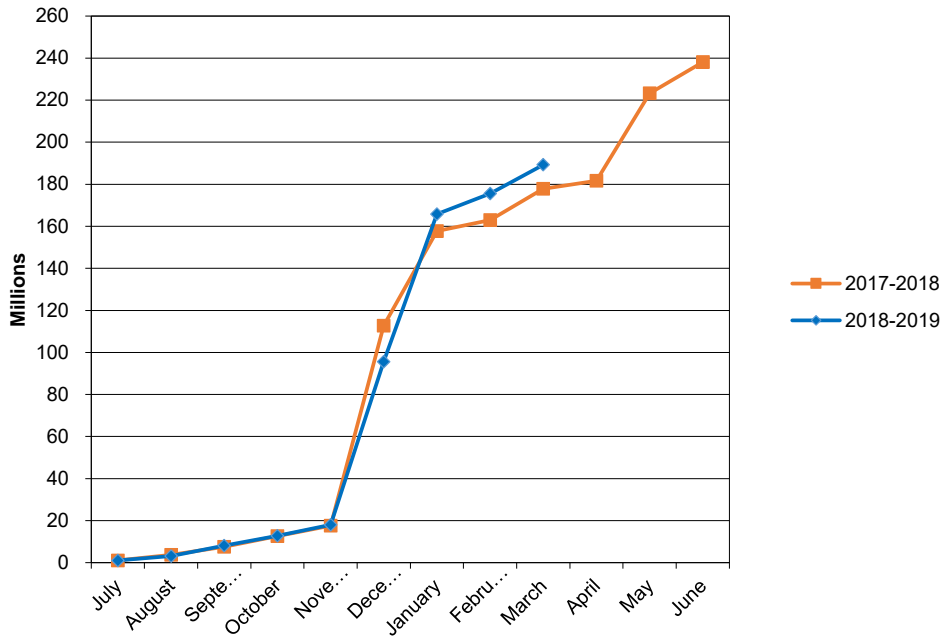
1. Health Insurance Costs – Higher health costs are a large portion of our benefit expenses. We have bid our pharmacy benefit manager through Business Health Coalition and with this, we will have substantial savings over market trends for our pharmacy beginning with October 1, 2018. We have opened our near site clinic for our employees and staff effective August. When looking at costs for 2019, we will have a zero dollar increase in premiums. We finished the 2018 year at a surplus. We experienced lower high cost cases and savings from our increased pharmacy rebates from our re-negotiated contract with Express Scripts.
2. Commercial Property Assessments Appeals – As you are aware this has been a struggle over the last several years. We have seen our collection rate fluctuate due to these settlements. We worked with the state auditor's office last year and have calculated an additional \$3.7 million in recoupment. We continue

to work with St. Louis County. Our settlements through January have increased from \$100,000,000 in total from last year in AV to \$130,000,000 for July – January. This will most likely result in a collection rate lower than our budgeted 97%.

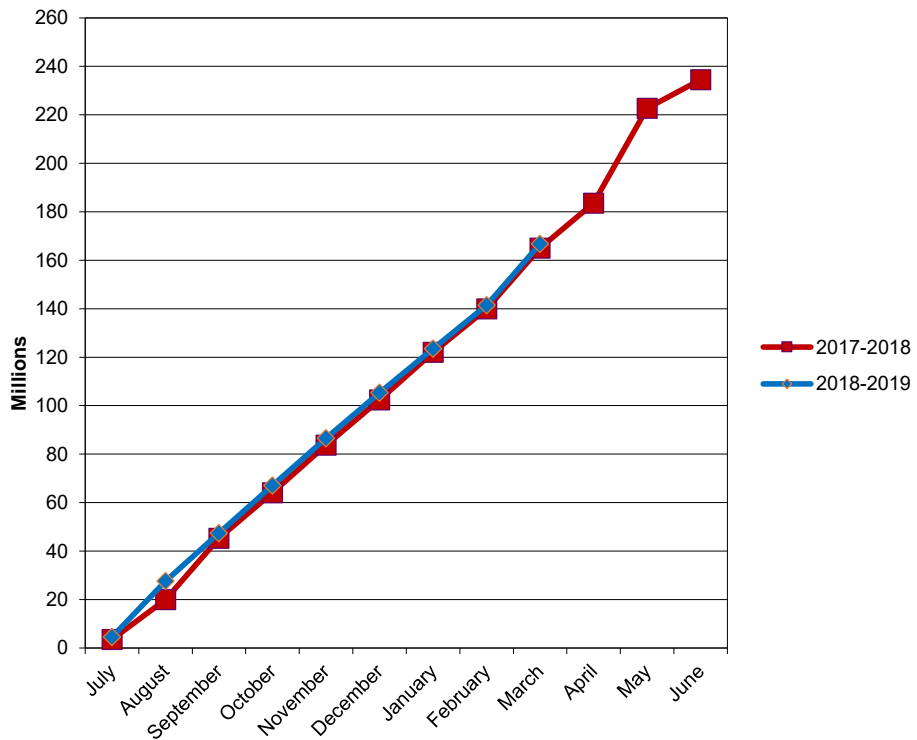
3. New Construction Assessments - In September we received our final amounts from St. Louis County. We had another strong year with new construction.
4. Interest Income –Interest rates are continuing to increase. As we make our investment of funds, we will be able to project an interest income this year. Our interest from our banking account is holding strong.
5. State Revenue –DESE will be adjusting the State Adequacy Target for the formula revenues. The State Adequacy Target is still well below the amount determined by the original formula legislation.
6. Unaccredited Schools – Parkway is continuing provide educational services for students from both Riverview Gardens and the Normandy School Districts that have been enrolled in Parkway. The tuition to be charged to the Normandy School District and to Riverview Garden’s School District is lower than Parkway’s regular tuition rates and is the rate charged to VICC. The students are able to remain in Parkway until they are at a natural transition and then will return to their home district.
7. Spot Market Purchases – For information purposes, fiscal year-to-date purchases under the spot market procurement policy are as follows:

Fuel	\$	387,013.54
Paper	\$	157,474.80
Trash Liner	\$	37,692.00
Produce:	\$	89,295.00

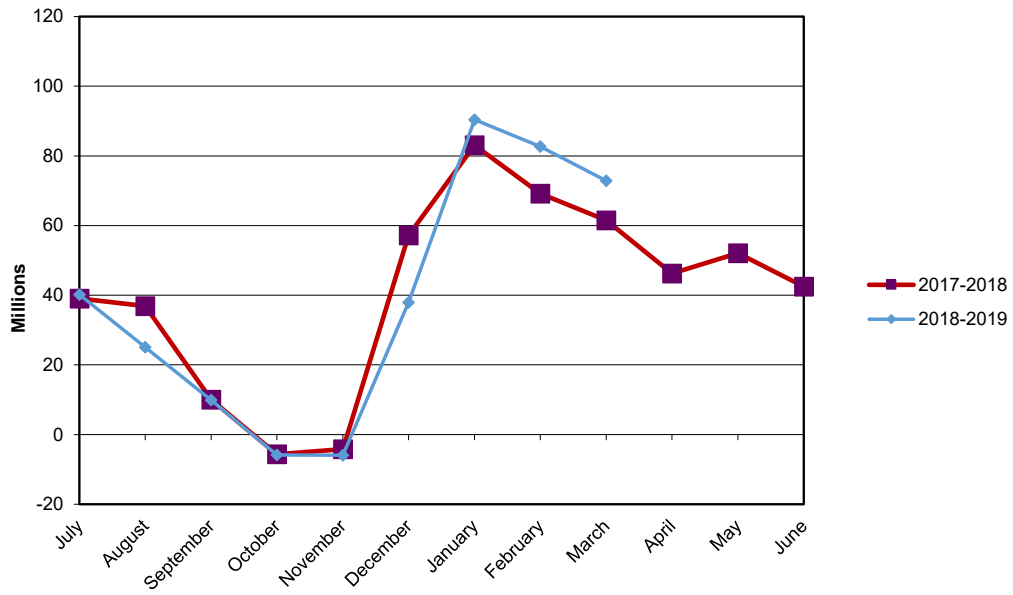
## PARKWAY SCHOOL DISTRICT ACTUAL OPERATING REVENUE

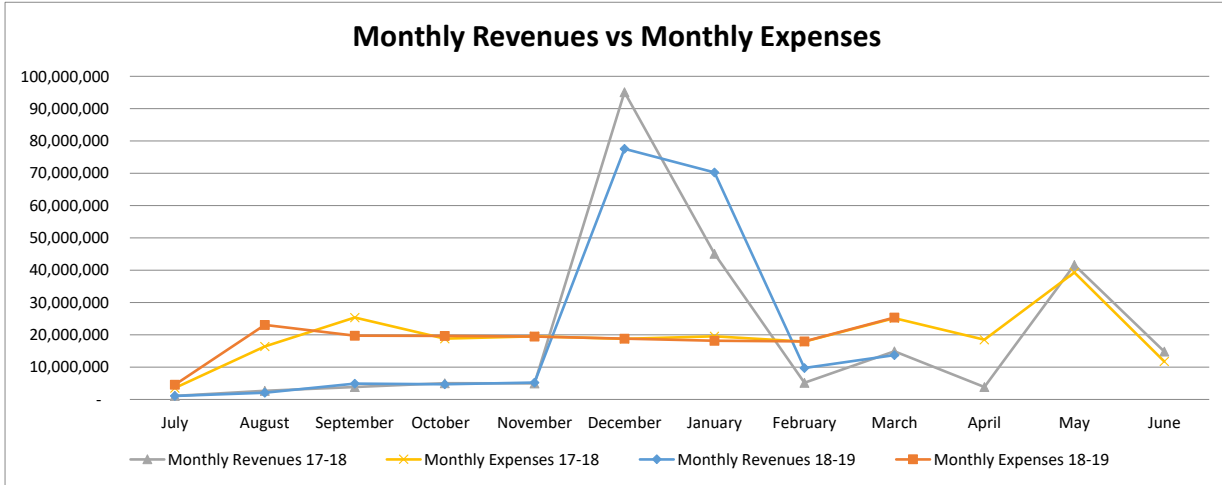
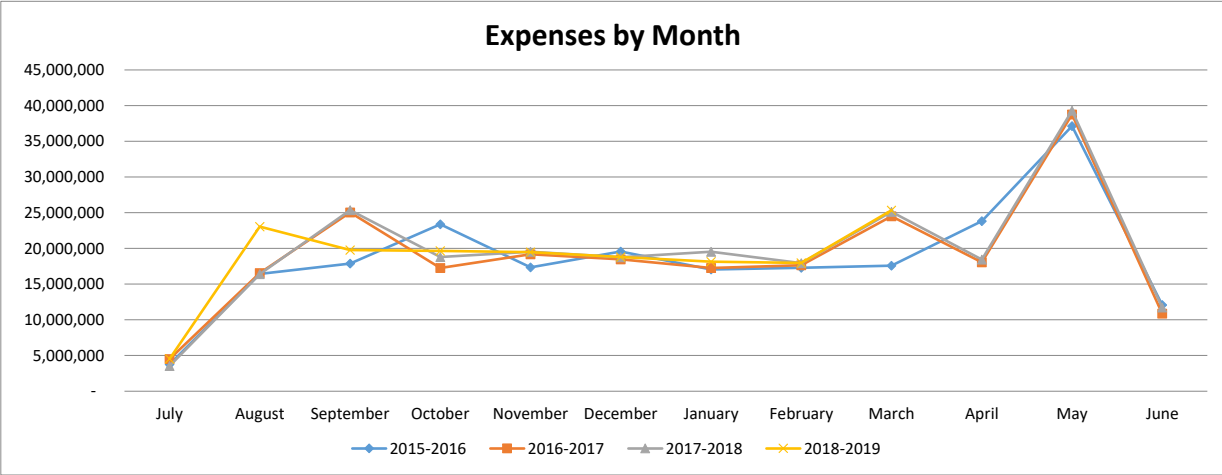
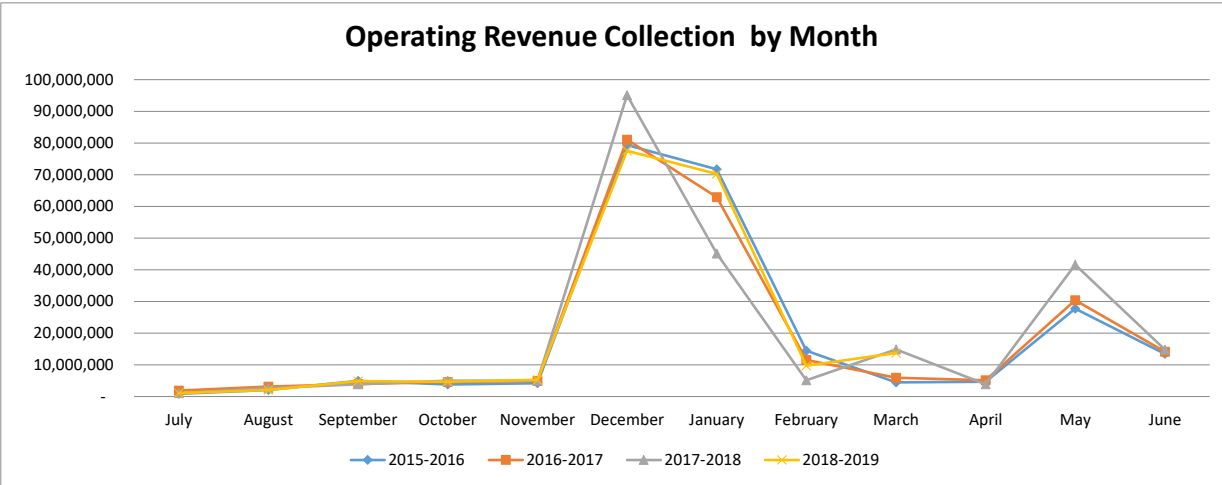


## PARKWAY SCHOOL DISTRICT ACTUAL OPERATING EXPENDITURES



# PARKWAY SCHOOL DISTRICT OPERATING FUND CASH AND INVESTMENTS





**Parkway School District  
Recapitulation of Funds  
Budget 2018-2019 With Restatement of Opening Balances**

FY2019 Full Year Projection	<b>Operating</b>	<b>Debt Service</b>	<b>Capital Projects</b>	<b>2014 Bond Issue</b>	<b>2018 Bond Issue</b>	<b>All Funds</b>
Beginning Fund Balance	46,492,486	36,717,985	2,253,613	17,496,421	-	102,960,505
Revenues	240,064,725	23,671,221	7,427,439	15,000	-	271,178,385
Expenses	238,077,339	25,433,648	3,592,730	17,511,421	-	284,615,138
Ending Fund Balance	48,479,872	34,955,558	6,088,322	-	-	89,523,752

ACTUAL FY19 THROUGH 3/31/19	<b>Operating</b>	<b>Debt Service</b>	<b>Capital Projects</b>	<b>2014 Bond Issue</b>	<b>2018 Bond Issue</b>	<b>All Funds</b>
Beginning Fund Balance	46,492,486	36,717,985	2,253,613	17,496,421	-	102,960,505
Revenues	189,238,856	19,641,253	6,265,690	157,179	1,100,000	216,402,978
Expenses	166,772,668	23,111,434	1,830,217	14,339,932	232,984	206,287,235
Ending Fund Balance	68,958,674	33,247,804	6,689,086	3,313,668	867,016	113,076,248

ACTUAL FY18 THROUGH 3/31/18	<b>Operating</b>	<b>Debt Service</b>	<b>Capital Projects</b>	<b>2014 Bond Issue</b>	<b>2018 Bond Issue</b>	<b>All Funds</b>
Beginning Fund Balance	44,415,182	13,767,360	652,502	38,079,930	-	96,914,974
Revenues	177,850,992	48,529,207	2,507,429	121,763	-	229,009,391
Expenses	164,978,477	59,337,678	2,484,071	13,777,716	-	240,577,942
Ending Fund Balance	57,287,697	2,958,889	675,860	24,423,977	-	85,346,423



**PARKWAY SCHOOL DISTRICT  
ACCRUAL BALANCE SHEET  
March 31, 2019**

	<b>TOTAL- ALL FUNDS 3/31/2019</b>	<b>TOTAL- ALL FUNDS 3/31/2018</b>
<b>ASSETS</b>		
Cash & Investments	\$ 131,929,398	100,352,391
Accounts Receivable	\$ 203,461	249,975
Inventories	\$ 793,483	679,461
Prepaid Expenses	\$ 1,692,569	1,294,994
Land	\$ 3,457,837	3,457,837
Land Improvements	\$ 17,072,007	18,034,643
Buildings/Improvements	\$ 163,361,982	151,631,814
Construction in Progress	\$ 50,522,194	52,539,700
Equipment	\$ 12,674,728	13,815,316
<b>Total Assets</b>	<b>\$ 381,707,659</b>	<b>342,056,131</b>
<b>LIABILITIES &amp; FUND BALANCE</b>		
Accounts Payable - Operating Funds	\$ 895,832	714,538
Accounts Payable - Bond Issue Funds	\$ -	22,700
Wages, Payroll Taxes, and Benefits Payable	\$ 5,638,563	5,498,701
Bonds Payable	\$ 190,760,000	201,620,000
Interest Payable	\$ 2,578,845	1,924,587
Liability for Compensated Absences	\$ 1,502,251	1,432,869
Liability for Early Retirement	\$ 902,168	1,932,641
<b>Total Liabilities</b>	<b>\$ 202,277,659</b>	<b>213,146,036</b>
Bond Issue Fund Balance	\$ 4,180,684	24,423,977
Debt Service Fund Balance	\$ 33,247,804	2,958,889
Capital Projects Fund Balance	\$ 6,689,086	675,860
Equity in Fixed Assets less Long Term Liabilities	\$ 51,345,484	32,569,213
Medical Fund Balance	\$ 15,008,268	10,994,459
Operating Fund Balance	\$ 68,958,674	57,287,697
<b>Total Fund Balance</b>	<b>\$ 179,430,000</b>	<b>128,910,095</b>
<b>TOTAL LIABILITIES &amp; FUND BALANCE</b>	<b>\$ 381,707,659</b>	<b>342,056,131</b>

**BREAKOUT OF CASH & INVESTMENT BALANCE**

	<u>3/31/2019</u>	<u>3/31/2018</u>
MEDICAL FUND CASH	15,008,268	10,994,459
DEBT SERVICE FUND CASH	33,247,645	2,937,589
DEBT SERVICE FUND INVESTMENTS	143	7,764
BOND ISSUE FUND CASH	4,172,879	6,152,307
BOND ISSUE FUND INVESTMENTS	7,805	18,726,893
CAPITAL PROJECTS FUND CASH	6,663,222	-
OPERATING FUND CASH	72,829,436	61,533,379
<b>TOTAL</b>	<b>131,929,398</b>	<b>100,352,391</b>

**RESTRICTED RESERVE**

	<u>3/31/2019</u>	<u>3/31/2018</u>
FOOD SERVICE	242,706	455,137
MEDICAL BENEFITS	15,008,268	10,994,459
STUDENT ACTIVITY	3,266,906	3,257,941
<b>TOTAL</b>	<b>18,517,880</b>	<b>14,707,537</b>

PARKWAY SCHOOL DISTRICT  
MODIFIED ACCRUAL REVENUE SCHEDULE  
TOTAL ALL FUNDS

	YEAR TO DATE 3-31-2019				YEAR TO DATE 3-31-2018			
	BUDGETED REVENUE	REVENUE REALIZED	% REALIZED	BALANCE TO BE REALIZED	REVENUE** 6/30/2018	REVENUE REALIZED	% REALIZED	BALANCE TO BE REALIZED
<b>LOCAL</b>								
Property Taxes	172,325,159	142,556,444	82.73%	29,768,715	168,199,861	133,931,162	79.63%	34,268,699
Sales Tax	15,819,210	9,310,315	58.85%	6,508,895	15,440,981	8,882,615	57.53%	6,558,366
M&M Surtax	4,733,790	3,016,673	63.73%	1,717,117	4,857,510	2,513,410	51.74%	2,344,100
Food Service	4,070,811	3,280,756	80.59%	790,055	4,209,014	3,328,245	79.07%	880,769
Other Local	8,256,010	9,590,628	116.17%	(1,334,618)	9,245,144	7,626,085	82.49%	1,619,059
VICC-VST Revenue	7,431,350	2,538,621	34.16%	4,892,729	7,890,932	2,507,626	31.78%	5,383,306
<b>TOTAL LOCAL</b>	<b>212,636,330</b>	<b>170,293,437</b>	<b>80.09%</b>	<b>42,342,893</b>	<b>209,843,442</b>	<b>158,789,143</b>	<b>75.67%</b>	<b>51,054,299</b>
<b>INTEREST</b>	<b>894,906</b>	<b>824,883</b>	<b>92.18%</b>	<b>70,023</b>	<b>798,119</b>	<b>488,466</b>	<b>61.20%</b>	<b>309,653</b>
<b>COUNTY</b>	<b>3,216,007</b>	<b>3,316,254</b>	<b>103.12%</b>	<b>(100,247)</b>	<b>3,299,694</b>	<b>3,080,447</b>	<b>93.36%</b>	<b>219,247</b>
<b>STATE</b>								
Basic Formula	2,413,326	1,826,362	75.68%	586,964	2,702,394	2,047,542	75.77%	654,852
Classroom Trust	6,569,703	4,190,466	63.78%	2,379,237	6,406,422	4,337,918	67.71%	2,068,504
Transportation	1,121,936	923,737	82.33%	198,199	1,168,043	875,245	74.93%	292,798
Other State	1,586,861	1,635,519	103.07%	(48,658)	1,998,855	1,501,648	75.13%	497,207
<b>TOTAL STATE</b>	<b>11,691,826</b>	<b>8,576,084</b>	<b>73.35%</b>	<b>3,115,742</b>	<b>12,275,714</b>	<b>8,762,353</b>	<b>71.38%</b>	<b>3,513,361</b>
<b>FEDERAL</b>								
Federal Food Service	2,112,600	1,454,683	68.86%	657,917	2,145,449	1,485,820	69.25%	659,629
Other Federal Entitlements	3,178,963	1,216,601	38.27%	1,962,362	2,991,905	1,200,581	40.13%	1,791,324
<b>TOTAL FEDERAL</b>	<b>5,291,563</b>	<b>2,671,284</b>	<b>50.48%</b>	<b>2,620,279</b>	<b>5,137,354</b>	<b>2,686,401</b>	<b>52.29%</b>	<b>2,450,953</b>
<b>OTHER FINANCING SOURCES</b>								
Transportation Reimbursement	2,748,874	1,096,278	39.88%	1,652,596	2,884,503	1,273,870	44.16%	1,610,633
Tuition From Other Districts	50,000	48,416	96.83%	1,584	206,142	140,191	68.01%	65,951
Sale Of Property	35,219	15,330	43.53%	19,889	35,219	26,919	76.43%	8,300
<b>TOTAL OTHER FINANCING SOURCES</b>	<b>2,834,093</b>	<b>1,160,024</b>	<b>40.93%</b>	<b>1,674,069</b>	<b>3,125,864</b>	<b>1,440,980</b>	<b>46.10%</b>	<b>1,684,884</b>
<b>SUB-TOTAL OPERATING REVENUE</b>	<b>236,564,725</b>	<b>186,841,966</b>	<b>78.98%</b>	<b>49,722,759</b>	<b>234,480,187</b>	<b>175,247,790</b>	<b>74.74%</b>	<b>59,232,397</b>
<b>STUDENT ACTIVITIES</b>	<b>3,500,000</b>	<b>2,396,890</b>	<b>68.48%</b>	<b>1,103,110</b>	<b>3,623,837</b>	<b>2,603,202</b>	<b>71.84%</b>	<b>1,020,635</b>
<b>TOTAL OPERATING REVENUE</b>	<b>240,064,725</b>	<b>189,238,856</b>	<b>78.83%</b>	<b>50,825,869</b>	<b>238,104,024</b>	<b>177,850,992</b>	<b>74.69%</b>	<b>60,253,032</b>
<b>NON-OPERATING REVENUES</b>								
2019 Bond Issue	-	1,100,000	0.00%	(1,100,000)	-	-	#DIV/0!	-
2015 Bond Issue Interest/Premium	15,000	157,179	1047.86%	(142,179)	302,657	121,763	40.23%	180,894
Refunding Bond Issuance	-	-	0.00%	-	27,405,000	-	0.00%	27,405,000
Refunding Bond Issue Premium	-	-	0.00%	-	2,276,429	-	0.00%	2,276,429
Debt Service Property Taxes	22,532,176	18,639,802	82.73%	3,892,374	22,185,774	17,665,689	79.63%	4,520,085
Debt Service Interest/Premium	505,192	385,565	76.32%	119,627	729,102	2,870,372	393.69%	(2,141,270)
Debt Service County Revenue	633,853	615,886	97.17%	17,967	642,409	27,993,146	4357.53%	(27,350,737)
Cap. Projects Property Taxes	6,883,809	5,694,650	82.73%	1,189,159	2,263,855	1,802,621	0.00%	461,234
Capital Projects Other	243,396	279,481	114.83%	20,519	412,470	84,712	0.00%	327,758
Capital Projects Grants	-	-	0.00%	-	290,055	290,055	0.00%	-
Marketing Agreement	300,000	291,250	97.08%	8,750	378,750	330,000	87.13%	48,750
Capital Interest/Premium	234	309	132.05%	(75)	236	41	100.00%	195
<b>TOTAL ALL REVENUE SOURCES</b>	<b>271,178,385</b>	<b>216,402,978</b>	<b>79.80%</b>	<b>54,775,407</b>	<b>294,990,760</b>	<b>229,009,391</b>	<b>77.63%</b>	<b>65,981,369</b>

EXPENDITURE SUMMARY BY OBJECT  
TOTAL ALL FUNDS  
March 31, 2019

	BUDGET	ACTUAL	%	ACTUAL**	ACTUAL	%	CHANGE FROM PRIOR YEAR	
	2018-2019	EXPENDITURES YTD 3/31/2019	EXPENDED 2018-2019	EXPENDITURES 06/30/2018	EXPENDITURES YTD 3/31/2018	EXPENDED 2017-2018	\$	%
<b>SALARIES</b>								
Certificated	100,407,728	68,417,662	68.14%	98,362,989	67,235,219	68.35%	1,182,443	-0.21%
Classified	38,863,174	27,674,763	71.21%	37,714,509	27,429,122	72.73%	245,641	-1.52%
Administrative	11,987,413	9,325,682	77.80%	11,740,688	9,046,409	77.05%	279,273	0.74%
<b>TOTAL SALARIES</b>	<b>151,258,315</b>	<b>105,418,107</b>	<b>69.69%</b>	<b>147,818,186</b>	<b>103,710,750</b>	<b>70.16%</b>	<b>1,707,357</b>	<b>-0.47%</b>
<b>BENEFITS</b>								
Retirement, Social Security and Medicare	25,037,375	17,761,215	70.94%	25,027,067	17,510,512	69.97%	250,703	0.97%
Medical, Dental and Life Insurance	28,999,615	19,610,547	67.62%	27,759,590	19,488,808	70.21%	121,739	-2.58%
<b>TOTAL BENEFITS</b>	<b>54,036,990</b>	<b>37,371,762</b>	<b>69.16%</b>	<b>52,786,657</b>	<b>36,999,320</b>	<b>70.09%</b>	<b>372,442</b>	<b>-0.93%</b>
<b>PURCHASED SERVICES</b>								
Substitute Services	2,948,473	1,914,543	64.93%	3,108,104	2,232,260	71.82%	(317,717)	-6.89%
Tuition	148,000	233,785	157.96%	137,925	137,237	99.50%	96,548	58.46%
Professional Services	2,848,330	1,613,825	56.66%	1,876,035	1,764,809	94.07%	(150,984)	-37.41%
Audit	34,000	33,800	99.41%	29,000	29,000	100.00%	4,800	-0.59%
Technical Services	92,400	96,001	103.90%	156,988	102,383	65.22%	(6,382)	38.68%
Legal Services	200,000	123,303	61.65%	171,663	115,646	67.37%	7,657	-5.72%
Property Services	2,184,431	1,549,095	70.92%	2,181,468	1,676,916	76.87%	(127,821)	-5.96%
Travel & Contracted Trans.	1,748,554	1,015,289	58.06%	2,354,238	1,191,868	50.63%	(176,579)	7.44%
Property Insurance	864,809	823,526	95.23%	830,850	780,247	93.91%	43,279	1.32%
Liability Insurance	847,639	837,432	98.80%	801,690	802,234	100.07%	35,198	-1.27%
Other Purchased Services	1,686,392	1,036,676	61.47%	1,664,595	922,127	55.40%	114,549	6.08%
<b>TOTAL PURCHASED SERVICES</b>	<b>13,603,028</b>	<b>9,277,275</b>	<b>68.20%</b>	<b>13,312,556</b>	<b>9,754,727</b>	<b>73.27%</b>	<b>(477,452)</b>	<b>-5.07%</b>
<b>CONSUMABLES</b>								
General Supplies	3,955,734	2,362,332	59.72%	3,977,905	2,744,830	69.00%	(382,498)	-9.28%
Instructional Supplies	8,320,158	5,281,145	63.47%	6,437,240	4,645,011	72.16%	636,134	-8.68%
Library Books	279,575	223,679	80.01%	272,414	202,346	74.28%	21,333	5.73%
Energy Services	4,072,900	2,979,762	73.16%	3,989,929	2,686,863	67.34%	292,899	5.82%
Food Service Supplies	3,000,000	1,983,010	66.10%	2,462,106	2,191,503	89.01%	(208,493)	-22.91%
<b>TOTAL CONSUMABLES</b>	<b>19,628,367</b>	<b>12,829,928</b>	<b>65.36%</b>	<b>17,139,594</b>	<b>12,470,553</b>	<b>72.76%</b>	<b>359,375</b>	<b>-7.39%</b>
<b>OPERATING LEASES</b>	<b>50,639</b>	<b>41,215</b>	<b>81.39%</b>	<b>37,823</b>	<b>37,823</b>	<b>100.00%</b>	<b>3,392</b>	<b>-18.61%</b>
<b>SUBTOTAL OPERATING EXPENSES</b>	<b>238,577,339</b>	<b>164,938,287</b>	<b>69.13%</b>	<b>231,094,816</b>	<b>162,973,173</b>	<b>70.52%</b>	<b>1,965,114</b>	<b>-1.39%</b>
<b>STUDENT ACTIVITIES</b>	<b>3,500,000</b>	<b>1,834,381</b>	<b>52.41%</b>	<b>3,431,904</b>	<b>2,005,304</b>	<b>58.43%</b>	<b>(170,923)</b>	<b>-6.02%</b>
<b>ANTICIPATED EXPENDITURE SAVINGS</b>	<b>(4,000,000)</b>	<b>-</b>	<b>0.00%</b>	<b>-</b>	<b>-</b>	<b>0.00%</b>	<b>-</b>	<b>0.00%</b>
<b>TOTAL OPERATING EXPENSES</b>	<b>238,077,339</b>	<b>166,772,668</b>	<b>70.05%</b>	<b>234,526,720</b>	<b>164,978,477</b>	<b>70.35%</b>	<b>1,794,191</b>	<b>-0.30%</b>
<b>CAPITAL OUTLAY - NON BOND EXPENSES</b>								
Land Improvement	100,000	25,841	25.84%	439,404	365,580	83.20%	(339,739)	-57.36%
Building Alterations	130,000	(182,069)	-140.05%	109,544	76,239	69.60%	(258,308)	-209.65%
General Equipment	351,478	234,927	66.84%	592,157	1,595,717	269.48%	(1,360,790)	-202.64%
Instructional Equipment	861,619	100,271	11.64%	303,333	85,260	28.11%	15,011	-16.47%
Technology Equipment	200,000	153,870	76.94%	209,280	63,165	30.18%	90,705	46.75%
Student Activity	100,000	126,030	126.03%	96,799	79,524	82.15%	43,889	43.88%
Vehicles	240,000	149,853	62.44%	5,080	5,080	100.00%	144,773	-37.56%
School Buses	1,278,159	1,010,196	79.04%	1,159,675	-	100.00%	1,010,196	-20.96%
<b>TOTAL CAPITAL OUTLAY</b>	<b>3,261,256</b>	<b>1,618,919</b>	<b>49.64%</b>	<b>2,915,272</b>	<b>2,270,565</b>	<b>77.89%</b>	<b>(651,646)</b>	<b>-28.24%</b>
<b>2014 BOND ISSUE EXPENDITURES</b>	<b>17,011,421</b>	<b>14,339,932</b>	<b>84.30%</b>	<b>20,886,166</b>	<b>13,777,716</b>	<b>65.97%</b>	<b>562,216</b>	<b>18.33%</b>
<b>2018 BOND ISSUE EXPENDITURES</b>	<b>500,000</b>	<b>232,984</b>	<b>46.60%</b>	<b>-</b>	<b>-</b>	<b>0.00%</b>	<b>232,984</b>	<b>46.60%</b>
<b>CAPITAL FUND - BUS LEASES</b>	<b>331,474</b>	<b>211,298</b>	<b>63.74%</b>	<b>328,980</b>	<b>213,506</b>	<b>64.90%</b>	<b>(2,208)</b>	<b>-1.15%</b>
<b>DEBT SERVICE - GO BONDS</b>	<b>25,433,648</b>	<b>23,111,434</b>	<b>90.87%</b>	<b>30,288,090</b>	<b>59,337,678</b>	<b>195.91%</b>	<b>(36,226,244)</b>	<b>-105.04%</b>
<b>GRAND TOTAL EXPENSES</b>	<b>284,615,138</b>	<b>206,287,235</b>	<b>72.48%</b>	<b>288,945,228</b>	<b>240,577,943</b>	<b>83.26%</b>	<b>(34,290,708)</b>	<b>-10.78%</b>

**FOOD SERVICE  
STATEMENT OF INCOME AND EXPENSE  
March 31, 2019**

		<u>BUDGET FY19</u>	<u>CURRENT MONTH</u>	<u>ACTUAL EXPENDITURES YTD 3/31/2019</u>	<u>% EXPENDED</u>	<u>PRIOR YEAR ACTUAL FY18</u>	<u>PRIOR YEAR TO DATE March 2018</u>	<u>PRIOR YEAR % EXPENDED</u>
<b>RESERVE FOOD SERVICE SURPLUS</b>	-72.5%		\$220,579	\$108,211		\$135,350	\$392,807	
<b>INCOME</b>								
<b>LOCAL</b>	3.1%	4,070,811	\$525,924	\$3,280,756	80.59%	\$4,209,014	\$3,181,894	75.60%
<b>STATE</b>	-0.4%	38,039	\$2,199	\$18,365	48.28%	\$23,694	\$18,447	77.85%
<b>FEDERAL</b>	1.7%	2,112,600	\$196,300	\$1,647,287	77.97%	\$2,141,863	\$1,619,731	75.62%
<b>TOTAL INCOME</b>	2.6%	6,221,450	\$724,423	\$4,946,408	79.51%	\$6,374,571	\$4,820,072	75.61%
<b>COST OF GOODS SOLD:</b>								
<b>Beginning Inventory</b>	-7.1%		\$331,053	\$167,832		\$132,849	\$180,562	135.92%
<b>Add: Purchases-Food</b>	-3.9%	3,000,000	\$225,137	\$1,983,010	66.10%	\$2,590,905	\$2,064,181	79.67%
<b>Purchases-Other</b>	23.9%	236,280	\$17,265	\$203,561	86.15%	\$186,290	\$164,251	88.17%
<b>Goods Available</b>	-2.3%		\$573,454	\$2,354,403		\$2,910,044	\$2,408,994	82.78%
<b>Less: Ending Inventory</b>	20.2%		\$323,800	\$323,800		\$167,832	\$269,345	160.48%
<b>TOTAL COST OF GOODS</b>	-5.1%	3,236,280	\$249,654	\$2,030,603	62.74%	\$2,742,212	\$2,139,649	78.03%
<b>GROSS MARGIN</b>	8.8%	\$2,985,170	\$474,769	\$2,915,805	97.68%	\$3,632,360	\$2,680,423	73.79%
<b>OPERATION COSTS:</b>								
<b>Salaries</b>	2.3%	2,144,495	\$328,534	\$1,811,167	84.46%	\$2,359,241	\$1,769,677	75.01%
<b>Fringe Benefits</b>	8.6%	1,227,870	\$121,923	\$912,629	74.33%	\$1,176,834	\$840,259	71.40%
<b>Purchased Services</b>	32.6%	91,716	\$8,234	\$60,945	66.45%	\$60,690	\$45,972	75.75%
<b>Operating Supplies</b>	36.0%	68,955	\$5,192	\$70,645	102.45%	\$53,316	\$51,945	97.43%
<b>Credit for Services</b>	-16.4%	(100,000)	(\$11,241)	(\$76,228)	76.23%	(\$128,799)	(\$91,220)	70.82%
<b>Total Operating Costs</b>	6.2%	3,433,036	\$452,642	\$2,779,158	80.95%	\$3,521,281	\$2,616,633	74.31%
<b>INCOME (LOSS) FROM OPERATIONS</b>	114.2%	(447,866)	\$22,127	\$136,648		\$111,078	\$63,790	57.43%
<b>EQUIPMENT</b>		200,000	\$0	\$2,153	1.08%	\$138,218	\$1,460	1.06%
<b>RESERVE FOOD SERVICE SURPLUS</b>	-46.7%		\$242,706	\$242,706		\$108,211	\$455,137	420.60%

**Parkway School District  
Building Location Recap Report**

Fiscal Year 2019 Through Period 9    Run Date: 04-15-2019 @ 12:55:14

	<b>Budget</b>	<b>Expended</b>	<b>Encumbrances</b>	<b>Unexpended</b>
FERN RIDGE HIGH	16,400.00	15,763.60	1,277.05	-640.65
CENTRAL HIGH	364,381.00	227,404.39	23,873.78	113,102.83
NORTH HIGH	288,008.00	187,068.46	17,034.36	83,905.18
WEST HIGH	338,231.00	253,198.02	48,915.32	36,117.66
SOUTH HIGH	478,348.00	280,843.54	36,272.82	161,231.64
SOUTHWEST MIDDLE	119,372.00	104,282.65	3,133.57	11,955.78
CENTRAL MIDDLE	192,990.00	119,929.23	46,244.14	26,816.63
NORTHEAST MIDDLE	170,385.00	162,782.79	3,904.79	3,697.42
SOUTH MIDDLE	134,712.00	88,364.79	12,001.99	34,345.22
WEST MIDDLE	225,907.00	191,360.86	34,100.76	445.38
BARRETS ELEM.	78,502.00	46,216.28	932.52	31,353.20
BELLERIVE ELEM.	68,316.00	44,990.72	1,094.36	22,230.92
CARMAN TRAILS ELEM.	83,652.00	46,572.23	6,135.72	30,944.05
CLAYMONT ELEM.	74,442.00	60,660.30	5,374.65	8,407.05
CRAIG ELEM.	90,326.00	74,888.03	6,213.57	9,224.40
GREEN TRAILS ELEM.	69,845.00	48,249.70	282.38	21,312.92
HANNA WOODS ELEM.	74,485.00	64,283.78	2,079.16	8,122.06
HENRY ELEM.	106,539.00	52,524.90	1,210.54	52,803.56
HIGHCROFT ELEM.	62,387.00	13,447.44	1,000.42	47,939.14
MASON RIDGE ELEM.	83,275.00	56,224.59	3,692.60	23,357.81
MCKELVEY ELEM.	109,182.00	58,514.62	2,507.50	48,159.88
OAK BROOK ELEM.	97,298.00	66,886.29	3,669.70	26,742.01
PIERREMONT ELEM.	83,195.00	61,171.41	3,095.87	18,927.72
RIVER BEND ELEM.	76,023.00	59,114.07	656.20	16,252.73
ROSS ELEM.	57,357.00	55,683.85	192.77	1,480.38
SORRENTO SPRINGS ELEM.	56,590.00	30,322.34	8,237.36	18,030.30
SHENANDOAH VALLEY ELEM.	95,971.00	69,456.06	2,876.24	23,638.70
WREN HOLLOW ELEM.	62,266.00	51,737.85	921.10	9,607.05
<b>Grand Total for Funds 10-12</b>	<b>3,704,131.00</b>	<b>2,563,537.09</b>	<b>255,179.33</b>	<b>885,414.58</b>
<b>Grand Total for Fund 20</b>	<b>0.00</b>	<b>2,918.96</b>	<b>0.00</b>	<b>-2,918.96</b>
<b>Grand Total for Fund 30</b>	<b>0.00</b>	<b>0.00</b>	<b>0.00</b>	<b>0.00</b>
<b>Grand Total for Funds 40-41</b>	<b>54,254.00</b>	<b>25,486.74</b>	<b>21,751.91</b>	<b>7,015.35</b>
<b>Grand Total All</b>	<b>3,758,385.00</b>	<b>2,591,942.79</b>	<b>276,931.24</b>	<b>889,510.97</b>

**Parkway School District  
Consolidated Budget - Programs Recap Report**

Fiscal Year 2019 Through Period 9    Run Date: 04-15-2019 @ 12:56:55

	<b>Budget</b>	<b>Expended</b>	<b>Encumbrances</b>	<b>Unexpended</b>
<b>SPECIAL READING</b>	17,871.00	10,987.94	1,210.19	5,672.87
<b>COMM ARTS</b>	202,510.00	116,398.41	10,487.49	75,624.10
<b>MATHEMATICS</b>	92,242.00	47,879.14	7,700.29	36,662.57
<b>FINE ARTS</b>	393,345.00	264,943.02	18,997.58	109,404.40
<b>PHYSICAL EDUCATION</b>	64,811.00	47,475.90	3,413.50	13,921.60
<b>SCIENCE</b>	130,491.00	71,471.03	1,521.86	57,498.11
<b>SOCIAL STUDIES</b>	108,715.00	76,121.62	1,585.38	31,008.00
<b>INSTRUCTIONAL TECHNOLOGY</b>	117,682.00	79,530.14	6,556.29	31,595.57
<b>GUIDANCE</b>	31,006.00	10,801.82	0.00	20,204.18
<b>ART</b>	147,208.00	118,149.90	10,538.81	18,519.29
<b>BLDG ADMIN SERVICES</b>	2,226,800.00	1,299,043.43	102,340.16	825,416.41
<b>AUDIO VISUAL SERVICES</b>	13,180.00	-612.34	-211.52	14,003.86
<b>BUSINESS EDUCATION</b>	48,677.00	18,082.81	4,180.96	26,413.23
<b>MODERN CLASSICAL LANG</b>	45,883.00	21,555.94	0.00	24,327.06
<b>FAMILY AND CONSUMER SC</b>	74,474.00	40,855.47	10,726.82	22,891.71
<b>INDUSTRIAL ARTS</b>	46,193.00	26,620.41	842.82	18,729.77
<b>STUDENT BODY ACT</b>	242,204.00	143,754.10	30,378.64	68,071.26
<b>DRIVERS EDUCATION</b>	920.00	159.27	0.00	760.73
<b>COOP VOC ED</b>	82,760.00	26,361.71	1,492.42	54,905.87
<b>UNIFIED STUDIES</b>	2,580.00	2,873.38	0.00	-293.38
<b>SPEECH</b>	28,911.00	15,397.15	0.00	13,513.85
<b>LIBRARY SVCS</b>	94,820.00	49,282.51	4,964.34	40,573.15
<b>HEALTH ED</b>	8,483.00	3,293.80	0.00	5,189.20
<b>EEE CAMP</b>	123,917.00	-243.94	76,468.00	47,692.94
<b>GIFTED EDUCATION</b>	218,386.00	159,623.88	207.55	58,554.57
<b>DRUG FREE SCHOOL</b>	133,408.48	92,748.92	556.78	40,102.78
<b>ADC</b>	619,443.00	529,127.66	0.00	90,315.34
<b>SUMMER SCHOOL</b>	1,519,475.00	127,800.55	17,105.36	1,374,569.09
<b>INSTRUCTIONAL STAFFING</b>	134,616,254.86	91,988,168.92	0.00	42,628,085.94
<b>BLDG LEVEL STAFFING</b>	17,196,851.00	12,717,877.76	0.00	4,478,973.24
<b>SPECIAL SERVICES</b>	505,018.00	275,481.24	8,363.61	221,173.15
<b>ESOL</b>	17,778.00	10,681.39	160.88	6,935.73
<b>ATHLETICS</b>	1,009,781.00	730,148.33	227,006.63	52,626.04
<b>ADULT BASIC EDUCATION</b>	1,684,775.00	1,112,308.34	19,045.11	553,421.55
<b>SWIM CLUB</b>	850,596.00	556,980.69	18,129.50	275,485.81
<b>EARLY CHILDHOOD</b>	1,714,276.00	1,276,778.32	2,733.11	434,764.57
<b>PRESCHOOLS</b>	2,138,430.00	1,677,839.17	846.92	459,743.91
<b>PARK ROCK COMM ED</b>	105,000.00	25,645.08	0.00	79,354.92

**Parkway School District  
Consolidated Budget - Programs Recap Report**

Fiscal Year 2019 Through Period 9    Run Date: 04-15-2019 @ 12:56:55

	<b>Budget</b>	<b>Expended</b>	<b>Encumbrances</b>	<b>Unexpended</b>
<b>STUDENT SERVICES</b>	129,295.00	148,760.52	0.00	-19,465.52
<b>PUPIL PERSONNEL</b>	2,042,806.00	1,932,255.85	103,032.24	7,517.91
<b>HEALTH SERVICES</b>	2,755,148.00	2,000,419.31	5,775.86	748,952.83
<b>GUIDANCE AND COUNSELING</b>	205,717.00	147,836.77	250.00	57,630.23
<b>SEB SUPPORT</b>	11,100.00	4,067.92	126.58	6,905.50
<b>TEACH LEARN ACCOUNTABILITY</b>	4,627,098.00	2,475,263.83	208,029.68	1,943,804.49
<b>PROFESSIONAL LEARNING</b>	1,349,713.00	723,027.32	2,654.24	624,031.44
<b>READING DIAGNOSTICS</b>	204,345.75	113,705.76	0.00	90,639.99
<b>EVALUATION</b>	267,638.00	195,927.52	622.13	71,088.35
<b>INSTRUC TECH LIBRARY MEDIA</b>	952,836.00	793,260.16	18,264.77	141,311.07
<b>STUDENT ASSESSMENT</b>	409,367.00	130,338.16	76,913.25	202,115.59
<b>PROGRESS MONITORING</b>	817,164.00	372,629.40	0.00	444,534.60
<b>BOARD OF EDUCATION</b>	217,455.00	194,834.90	0.00	22,620.10
<b>SUPERINTENDENT</b>	481,887.00	345,701.13	0.00	136,185.87
<b>DISTRICT DUES</b>	154,100.00	140,303.45	0.00	13,796.55
<b>LEGAL SERVICES</b>	175,000.00	123,302.69	53,418.13	-1,720.82
<b>DEPUTY SUPERINTENDENT</b>	347,512.00	223,567.16	552.40	123,392.44
<b>ASST SUPER OF STUDENT SERVICES</b>	324,513.00	217,169.31	0.00	107,343.69
<b>CHIEF FINANCIAL OFFICER</b>	312,444.00	234,495.16	297.03	77,651.81
<b>COMMUNICATIONS</b>	953,952.00	770,518.86	20,276.63	163,156.51
<b>SAFETY SECURITY</b>	1,368,648.00	950,802.93	257,094.81	160,750.26
<b>SPECIAL PROJECTS</b>	167,907.00	73,444.89	0.00	94,462.11
<b>FINANCE</b>	1,011,363.00	808,940.86	5,607.68	196,814.46
<b>INTERNAL EQUIP FIN</b>	456,360.00	323,945.57	133,774.10	-1,359.67
<b>RISK MGMT</b>	2,261,532.00	2,088,619.00	32,668.95	140,244.05
<b>FOOD SERVICES</b>	6,872,016.00	4,967,881.44	715,641.57	1,188,492.99
<b>PURCHASING</b>	395,962.00	296,824.19	457.12	98,680.69
<b>PRINT SHOP</b>	28,336.00	-2,278.10	2,666.86	27,947.24
<b>SCHOOL STORES</b>	440,123.00	287,540.13	93,760.12	58,822.75
<b>WAREHOUSE</b>	1,228,140.00	708,408.18	2,279.20	517,452.62
<b>MAILROOM</b>	94,053.00	59,719.77	1,541.29	32,791.94
<b>TECHNOLOGY</b>	7,243,781.00	5,898,252.34	212,128.14	1,133,400.52
<b>HUMAN RESOURCES</b>	1,143,585.00	821,331.30	7,765.97	314,487.73
<b>TRANSPORTATION</b>	6,918,901.00	5,564,311.80	127,159.79	1,227,429.41
<b>SSD TRANSPORTATION</b>	2,782,606.00	1,675,294.73	0.00	1,107,311.27
<b>FACILITY OPERATIONS</b>	8,198,278.00	5,813,679.31	57,081.23	2,327,517.46
<b>FACILITY MAINTENANCE</b>	5,209,547.00	3,569,087.08	374,566.65	1,265,893.27
<b>GROUNDS MAINTENANCE</b>	1,991,323.00	1,352,004.42	206,008.35	433,310.23



**Parkway School District  
Consolidated Budget - Programs Recap Report**

Fiscal Year 2019 Through Period 9    Run Date: 04-15-2019 @ 12:56:55

	<b>Budget</b>	<b>Expended</b>	<b>Encumbrances</b>	<b>Unexpended</b>
<b>PLANNING</b>	1,419,370.48	643,120.72	344,833.47	431,416.29
<b>ENVIRONMENTAL SVCS</b>	747,447.00	586,718.45	59,905.58	100,822.97
<b>FACILITY MANAGEMENT</b>	920,866.00	531,445.80	15,109.77	374,310.43
<b>SUSTAINABILITY</b>	5,325,222.00	3,266,862.36	641,458.23	1,416,901.41
<b>REBATE PROJECTS</b>	329,946.00	-298,694.75	18,256.00	610,384.75
<b>2014 BOND</b>	22,496,421.00	14,339,931.95	2,590,955.73	5,565,533.32
<b>2018 BOND</b>	3,016,930.00	232,983.91	12,614,494.22	-9,830,548.13
<b>DEBT SERVICE</b>	25,450,648.00	23,111,434.01	2,251.00	2,336,962.99
<b>STATE GRANTS</b>	372,071.50	145,357.44	0.00	226,714.06
<b>FEDERAL GRANTS</b>	2,513,148.00	1,340,177.25	42,972.33	1,129,998.42
<b>LOCAL GRANTS</b>	121,835.11	110,899.71	6,750.00	4,185.40
<b>Grand Total for Funds 10-12</b>	<b>85,152,564.59</b>	<b>60,094,020.94</b>	<b>3,909,190.24</b>	<b>21,149,353.41</b>
<b>Grand Total for Fund 20</b>	<b>154,200,715.59</b>	<b>104,844,267.00</b>	<b>0.00</b>	<b>49,356,448.59</b>
<b>Grand Total for Fund 30</b>	<b>25,450,648.00</b>	<b>23,111,434.01</b>	<b>2,251.00</b>	<b>2,336,962.99</b>
<b>Grand Total for Funds 40-41</b>	<b>26,119,754.00</b>	<b>16,044,118.88</b>	<b>3,118,815.12</b>	<b>-2,873,728.13</b>
<b>Grand Total All</b>	<b>293,940,612.18</b>	<b>204,326,824.74</b>	<b>19,644,750.58</b>	<b>69,969,036.86</b>

• **GLOSSARY**

ACCOUNTS PAYABLE - Unpaid amounts currently owed to vendors for goods and services provided.

ACCOUNTS RECEIVABLE - Revenues earned but not yet received by the District.

AMOUNT PROVIDED FOR BOND PRINCIPAL - Amount available to meet current and future bond payments.

AMOUNT TO BE PROVIDED FOR PRINCIPAL AND INTEREST - The amount of funds needed to repay remaining bonded indebtedness. This is a “memo type” entry and does not represent an actual accumulation of cash.

BONDS AND INTEREST PAYABLE - CURRENT - Amount of bond principal and interest payable in future years.

CONSTRUCTION IN PROGRESS - Amounts expended to date on construction projects not completed. When completed, this account is reduced by the total cost of the completed projects.

ENCUMBRANCES - Obligations in the form of purchase orders, contracts, salary commitments, etc. for which a budgeted appropriation has been made.

EQUITY IN GENERAL FIXED ASSETS - Represents the appropriation of funds over a number of years to acquire land, buildings / improvements, and equipment. It is an offset to the respective asset accounts.

FUND BALANCE - The excess of assets over liabilities, which represent the “net worth” of a fund.

FUNDS - The four basic funds and their purposes are:

Capital Projects (Building) - Only capital equipment and building additions / alterations can be charged to this fund. Primary sources of revenue are property / delinquent taxes, building leases, investment income and sale of bonds.

Debt Service - Bond principal, interest and fees associated with the issue and redemption of bonds are the only expenses chargeable to this fund. Primary sources of revenue are property / delinquent taxes and investment income.

General (Incidental) - Expenses not specifically chargeable to other funds are charged to this fund. Primary sources of revenue are property / delinquent taxes, sales tax, investment income, minimum guarantee, VST, textbook, transportation and food service.

Special Revenue (Teachers) - Only salaries for certificated personnel and the cost medical / dental / vision / life insurance can be charged to this fund. Primary sources of revenue are property / delinquent taxes, investment income, state utility tax, minimum guarantee and VST.

INVENTORIES - Value of consumables purchased for future use.

PREPAID EXPENSES - Services paid for in advance of use (e.g. insurance).

RESERVE - Portion of the fund balance which is segregated for a future use and, therefore, not available for future appropriation.

RESERVE FOR BUDGETED ENCUMBRANCE - Funds budgeted and encumbered but not yet spent.

RESTRICTED RESERVE - Balances in the General Fund or Capital Projects Fund restricted as to the use (e.g. future medical / dental benefits) or unspent bond issue funds.

UNREALIZED REVENUES - Revenues budgeted but not yet realized.

UNSPENT BUDGETED FUNDS - Funds budgeted but not expended or encumbered.



## FOR MONTH OF: MARCH - FY19

Attached is a list (alphabetical by vendor) of purchase orders and order for payments \$500 to \$15,000 and \$15,000 + which the administration has approved in accordance with Policy #DJEBP

Reports per DIC.BP

c: Patty Bedborough, Brian Whittle, Erik Lueders

ORDER FOR PAYMENT

\$500 - \$15,000

MARCH - FY19

VENDOR NAME	DOCUMENT	INVOICE	WARRANT	OBJECT	CHECK NO	AMOUNT
AARCH CASTER & EQUIP	354797	61186	REG	6411	488252	\$ 759.60
ACE FITNESS SERVICES	354750	1844	REG	6411	488254	\$ 844.78
AGPARTS	355096	1378488	REG	6412	488255	\$ 616.55
ALL STAR DISTRIBUTIN	352347	002494	REG	6411	487675	\$ 930.00
ARTS & EDUCATION COU	354163	031519 PAY	EARLY	2247	487821	\$ 526.28
ARTS & EDUCATION COU	351700	030119 PAY	EARLY	2247	487340	\$ 527.78
AXA EQUITABLE	354157	031519 PAY ROTH	EARLY	2227	487822	\$ 4,645.00
AXA EQUITABLE	351888	030119 PAY ROTH	EARLY	2227	487341	\$ 4,680.00
BECKER, CHRISTOPHER	352535	3819-2	REG	6319	487905	\$ 500.00
CIRCUIT CLERK ACCT	353568	031519 PAY	EARLY	2221	487569	\$ 937.20
CIRCUIT CLERK ACCT	351720	030119 PAY	EARLY	2221	487352	\$ 1,045.23
CONTROLCO	354802	19-208	REG	6411	488266	\$ 591.77
CONTROLCO	351611	19-124	REG	6411	487471	\$ 971.42
COOK, PAUL	355181	030619	EARLY	6312	488159	\$ 800.00
CORRIGAN	351409	PART B REIM	EARLY	6241	487356	\$ 621.50
CROWN C SUPPLY	352353	13743824-001	REG	6411	487474	\$ 700.83
CROWN C SUPPLY	352330	13606125-001	REG	6411	487474	\$ 723.36
CROWN C SUPPLY	352355	13606095-001	REG	6411	487474	\$ 768.66
CROWN C SUPPLY	352321	13743579-001	REG	6411	487474	\$ 942.16
DIANA S.DAUGHERTY	351722	030119 PAY	EARLY	2221	487358	\$ 1,884.20
DIANA S.DAUGHERTY	353570	031519 PAY	EARLY	2221	487572	\$ 1,884.20
EASTERN MISSOURI	353826	181924 PKWY WEST	EARLY	6398	487979	\$ 550.00
FAMILY SUPPORT PAYME	351724	030119 PAY	EARLY	2221	487364	\$ 3,285.20
FAMILY SUPPORT PAYME	353571	031519 PAY	EARLY	2221	487575	\$ 3,593.69
FIDELITY RETIREMENT	351890	030119 PAY ROTH	EARLY	2227	487365	\$ 3,570.00
FIDELITY RETIREMENT	354158	031519 PAY ROTH	EARLY	2227	487830	\$ 3,970.00
FORT ZUMWALT SCHOOL	352557	ENTRY-VJVBSKTBALL	EARLY	6391	487577	\$ 566.50
FRANCIS HOWELL SCHOO	353686	JAN2019	EARLY	6341	487985	\$ 721.38
GOLDS GYM	354172	031519 PAY	EARLY	2267	487834	\$ 4,311.94
GREGORY F.X. DALY	353540	FEB. CITY TAX W/H	EARLY	2211	487581	\$ 4,684.02
GREGORY F.X. DALY	355242	MARCH CITY TAX W/H	EARLY	2211	488174	\$ 7,336.73
HEARTLAND COCA-COLA	352497	6035200994	EARLY	6411	487583	\$ 523.47
HO, TU	353656	REFUND-622535	REG	6342	487928	\$ 531.00
INBIA	352499	47793	EARLY	6371	487586	\$ 525.00
INNOVATIVE PRINT GRO	354597	T-15759	REG	6411	488294	\$ 616.00
INSTANT IMPRINTS	352555	52224	REG	6411	487740	\$ 566.00
LAMA SEWING KITS	351436	04200933	REG	6411	487751	\$ 500.00
LEGALSHIELD	354171	031519 PAY	EARLY	2265	487841	\$ 2,943.48
LIPICS INC	352973	202664	032819	6411	3586	\$ 937.56
MIDWEST SHEET MUSIC	351661	105979	EARLY	6431	487594	\$ 789.00
MISSOURI SAVING FOR	351704	030119 PAY	EARLY	2241	487385	\$ 3,615.00
MISSOURI SAVING FOR	354166	031519 PAY	EARLY	2241	487847	\$ 3,715.00
MITCHELL, JEREMY	352839	022819 TVL	REG	6343	488124	\$ 529.54
MO STATE AUDITOR'S	354566	3.25.19 BOND REG FEE	MANUAL	6631	487951	\$ 1,000.00

MUSIC IN THE PARKS	353615	48386-1	032119	6398	3558	\$	800.00
MUSIC IN THE PARKS	353619	48386-2	032119	6398	3558	\$	800.00
MUSIC IN THE PARKS	353626	48386-3	032119	6398	3558	\$	800.00
MUSIC IN THE PARKS	353608	49514-1	032119	6398	3558	\$	900.00
PERFORMANT RECOVERY	351725	030119 PAY	EARLY	2221	487403	\$	544.57
PERFORMANT RECOVERY	353572	031519 PAY	EARLY	2221	487630	\$	544.57
PNEA	351705	030119 PAY	EARLY	2231	487406	\$	13,018.19
PNEA	354168	031519 PAY	EARLY	2231	487867	\$	13,018.19
RAYMOND, JULI	355123	RAYMOND032719	REG	6411	488332	\$	513.85
RIVER CITY RASCALS	353547	2019-PNE2	EARLY	6398	488211	\$	800.00
ROCKWOOD SCHOOL DIST	354665	2019-119	EARLY	6391	488212	\$	1,136.50
ROTH, MIKE	351824	030119 TVL	REG	6343	487536	\$	552.45
SECURITY EQUIPMENT S	354303	E98957	REG	6411	488136	\$	688.00
SECURITY INFORMATION	351852	30604	EARLY	6371	488221	\$	995.00
SOLO PERFORMANCE	351691	282796	REG	6411	487540	\$	918.00
SPARTAN TOOL LLC	353869	601710	REG	6411	487944	\$	545.00
SSI FURNISHINGS	351615	27986	EARLY	6411	487425	\$	749.57
ST. LOUIS SPORTSWEAR	352656	52645	040419	6411	3652	\$	566.75
TRANE U.S. INC	354888	39769112	EARLY	6411	488234	\$	667.00
TRINITY MT. CARMEL	354673	1175-01	EARLY	6391	488236	\$	750.00
U.S. DEPARTMENT OF E	351727	030119 PAY	EARLY	2221	487435	\$	1,034.84
U.S. DEPARTMENT OF E	353574	031519 PAY	EARLY	2221	487658	\$	1,034.84
UNITED WAY	351707	030119 PAY	EARLY	2245	487438	\$	598.46
UNITED WAY	354170	031519 PAY	EARLY	2245	487886	\$	598.46
VALIC	354155	031519 PAY	EARLY	2227	487891	\$	6,563.28
VALIC	351886	030119 PAY	EARLY	2227	487439	\$	6,684.28
VRSCO	351891	030119 PAY ROTH	EARLY	2227	487441	\$	1,225.00
VRSCO	354159	031519 PAY ROTH	EARLY	2227	487893	\$	1,225.00
VRSCO	351887	030119 PAY	EARLY	2227	487441	\$	12,073.47
VRSCO	354156	031519 PAY	EARLY	2227	487893	\$	12,073.47
WALSETH	352374	11172018	REG	6312	487805	\$	600.00
WATERWAY GAS AND WAS	353791	2019 FUNDRAISER	EARLY	6391	488049	\$	837.00
						<b>TOTAL:</b>	<b>\$ 159,136.77</b>

\$15,000+  
MARCH - FY19

VENDOR NAME	DOCUMENT	INVOICE	WARRANT	OBJECT	CHECK NO	AMOUNT	
AXA EQUITABLE	351884	030119 PAY	EARLY	2227	487341	\$ 24,275.48	
AXA EQUITABLE	354153	031519 PAY	EARLY	2227	487822	\$ 25,207.98	
FIDELITY RETIREMENT	351885	030119 PAY	EARLY	2227	487365	\$ 47,984.90	
FIDELITY RETIREMENT	354154	031519 PAY	EARLY	2227	487830	\$ 48,756.90	
						<b>TOTAL:</b>	<b>\$ 146,225.26</b>

## PURCHASE ORDERS

\$500 - \$15,000

MARCH FY 19

PO#	Vendor Name	PO Date	Order Amount	Balance	Status	1st GL Account
48190251	ADVANCED ELEVAT	03/27/2019	\$ 516.00	\$ 516.00	8 - Printed	40406147-6521-00049
58190237	AGON SPORT LLC	03/25/2019	\$ 1,064.00	\$ 1,064.00	8 - Printed	11149385-6411-09816
65190025	ALL STAR DISTRI	03/11/2019	\$ 2,983.60	\$ -	0 - Closed	10213870-6411
62190412	AMAZON	03/08/2019	\$ 800.00	\$ 738.93	8 - Printed	10221ALY-6411
92190018	AMAZON	03/11/2019	\$ 1,000.00	\$ 1,000.00	8 - Printed	10162710-6411-02001
92190019	AMAZON	03/11/2019	\$ 1,000.00	\$ 1,000.00	8 - Printed	10162014-6411-02001
11190056	AMERICAN HEART	03/14/2019	\$ 1,399.70	\$ -	0 - Closed	11149197-6411-07992
63190309	ASSETGENIE, INC	03/13/2019	\$ 3,264.50	\$ -	0 - Closed	10-1617
63190312	ASSETGENIE, INC	03/19/2019	\$ 3,320.25	\$ 3,320.25	8 - Printed	10-1617
56190211	BAR ASSN OF MET	03/25/2019	\$ 550.00	\$ -	0 - Closed	10141560-6398
43190060	BELSON OUTDOORS	03/27/2019	\$ 1,551.80	\$ 1,551.80	8 - Printed	10241923-6411
73190084	BETZ GOLF CENTE	03/06/2019	\$ 1,700.00	\$ 1,700.00	8 - Printed	10142120-6319
58190231	BIO CORP.	03/11/2019	\$ 712.80	\$ 712.80	8 - Printed	11149365-6411-07304
48190224	BIRKEL ELECTRIC	03/07/2019	\$ 1,940.00	\$ -	0 - Closed	40406126-6521-00019
48190225	BIRKEL ELECTRIC	03/07/2019	\$ 2,090.00	\$ 664.40	8 - Printed	40406126-6521-00019
63190304	BIRKEL ELECTRIC	03/01/2019	\$ 3,132.00	\$ -	0 - Closed	10-2150
48190223	BIRKEL ELECTRIC	03/07/2019	\$ 3,480.00	\$ -	0 - Closed	40406126-6521-00019
54190201	BLICK ART MATER	03/25/2019	\$ 1,626.35	\$ 1,626.35	8 - Printed	10111BJW-6411
62190424	BLUE VALLEY SCH	03/18/2019	\$ 1,500.00	\$ -	0 - Closed	10131300-6371
43190058	BOOKSOURCE INC	03/11/2019	\$ 1,217.00	\$ -	0 - Closed	10111AWJ-6411
45190027	BOOKSOURCE INC	03/13/2019	\$ 3,316.91	\$ 3,316.91	8 - Printed	10111AZG-6411
54190210	BRAXTON, AMY	03/29/2019	\$ 1,000.00	\$ 1,000.00	8 - Printed	11149321-6411-07464
62190433	CAROLINA BIOLOG	03/25/2019	\$ 2,957.34	\$ 2,957.34	8 - Printed	10113122-6411
58190227	CASUAL TEES	03/01/2019	\$ 534.00	\$ -	0 - Closed	11149365-6411-08904
58190236	CASUAL TEES	03/25/2019	\$ 600.00	\$ 600.00	8 - Printed	11149365-6411-08368
56190210	CASUAL TEES	03/25/2019	\$ 808.50	\$ 808.50	8 - Printed	11149342-6411-08904
56190208	CASUAL TEES	03/25/2019	\$ 2,653.50	\$ -	0 - Closed	102410BZ-6411
56190209	CASUAL TEES	03/25/2019	\$ 3,499.80	\$ -	0 - Closed	11149342-6411-08904
63190308	CDW-G	03/13/2019	\$ 510.16	\$ -	0 - Closed	10235330-6412
48190246	CHIODINI ASSOCI	03/18/2019	\$ 12,500.00	\$ 12,500.00	8 - Printed	48406380-6521-00077
48190252	CI SELECT	03/27/2019	\$ 750.00	\$ 750.00	8 - Printed	40406126-6521-00019
50190140	CITY MUSEUM-EVE	03/14/2019	\$ 2,100.00	\$ 2,100.00	8 - Printed	11149860-6398-07527
73190082	CITY OF BALLWIN	03/06/2019	\$ 4,200.00	\$ 4,200.00	8 - Printed	10142120-6319
97190143	CLARKE POWER S	03/29/2019	\$ 3,000.00	\$ 3,000.00	8 - Printed	10255709-6319
85190367	COMPI DISTRIBUT	03/25/2019	\$ 4,508.16	\$ 4,508.16	8 - Printed	10111BMF-6411
85190354	COMPI DISTRIBUT	03/08/2019	\$ 5,157.42	\$ -	0 - Closed	102550DU-6411 *
63190315	COMPUTER INFORM	03/25/2019	\$ 1,476.17	\$ -	0 - Closed	10235020-6316
73190086	CRESCENT FARMS	03/06/2019	\$ 3,300.00	\$ 3,300.00	8 - Printed	10142120-6319
73190085	CREVE COEUR REC	03/06/2019	\$ 7,200.00	\$ 7,200.00	8 - Printed	10142120-6319
73190083	CRYSTAL SPRINGS	03/06/2019	\$ 3,600.00	\$ 3,600.00	8 - Printed	10142120-6319
97190134	CUMMINS MID-SOU	03/07/2019	\$ 2,600.00	\$ 1,608.02	8 - Printed	10051410-6411
48190234	DOCUMENT IMAGIN	03/13/2019	\$ 3,000.00	\$ 1,694.56	8 - Printed	48406030-6521-00078
48190247	DOCUMENT IMAGIN	03/25/2019	\$ 3,500.00	\$ 3,500.00	8 - Printed	48406020-6521-00077
2190072	ELLIOTT DATA SY	03/08/2019	\$ 2,787.00	\$ 2,787.00	8 - Printed	10111650-6412
85190362	ENERGY PETROLEU	03/19/2019	\$ 3,710.93	\$ -	0 - Closed	10255AJS-6486

PO#	Vendor Name	PO Date	Order Amount	Balance	Status	1st GL Account
62190435	ERIC ARMIN INC.	03/25/2019	\$ 2,524.34	\$ 2,524.34	8 - Printed	10113112-6412
3	F J JURCIC CO	03/14/2019	\$ 1,408.10	\$ 1,408.10	8 - Printed	10235280-6337
85190361	F J JURCIC CO	03/19/2019	\$ 3,497.00	\$ 3,497.00	8 - Printed	10255AIR-6332
63190318	FALCON TECHNOLO	03/29/2019	\$ 654.10	\$ 654.10	8 - Printed	10235370-6412
48190227	FGM ARCHITECTS	03/11/2019	\$ 10,000.00	\$ 10,000.00	8 - Printed	48406200-6521-00091
48190230	FGM ARCHITECTS	03/13/2019	\$ 10,000.00	\$ 10,000.00	8 - Printed	48406290-6521-00096
48190231	FGM ARCHITECTS	03/13/2019	\$ 10,000.00	\$ 10,000.00	8 - Printed	48406320-6521-00098
48190232	FGM ARCHITECTS	03/13/2019	\$ 10,000.00	\$ 10,000.00	8 - Printed	48406220-6521-00092
48190233	FGM ARCHITECTS	03/13/2019	\$ 10,000.00	\$ 10,000.00	8 - Printed	48406340-6521-00099
62190421	FISHER SCIENTIF	03/18/2019	\$ 863.36	\$ 863.36	8 - Printed	10113122-6411
83190116	FOLLETT SCHOOL	03/18/2019	\$ 3,457.08	\$ 3,457.08	8 - Printed	10223680-6441
83190115	FOLLETT SCHOOL	03/13/2019	\$ 3,459.05	\$ 3,459.05	8 - Printed	10223910-6441
62190411	FUEL EDUCATION	03/08/2019	\$ 2,600.00	\$ -	0 - Closed	10113422-6311 *
50190143	GARDNER, DOUGLA	03/25/2019	\$ 1,000.00	\$ -	0 - Closed	11149307-6319-08528
62190434	GARDNER, DOUGLA	03/25/2019	\$ 1,250.00	\$ 1,250.00	8 - Printed	10111306-6312
48190254	GEOTECHNOLOGY,	03/29/2019	\$ 1,000.00	\$ 1,000.00	8 - Printed	40406144-6531-00072
48190255	GEOTECHNOLOGY,	03/29/2019	\$ 10,000.00	\$ 10,000.00	8 - Printed	40406166-6521-00077
48190256	GEOTECHNOLOGY,	03/29/2019	\$ 10,000.00	\$ 10,000.00	8 - Printed	40406145-6521-00078
46190049	HEART ZONES INC	03/25/2019	\$ 3,713.15	\$ -	0 - Closed	10111BBG-6411 *
58190226	HILL, STEVEN	03/01/2019	\$ 1,509.00	\$ 1,509.00	8 - Printed	11149365-6411-08155
56190205	JEFFCO TRAVEL S	03/11/2019	\$ 702.00	\$ -	0 - Closed	10213790-6398
54190191	JEFFCO TRAVEL S	03/11/2019	\$ 9,277.00	\$ -	0 - Closed	11149326-6398-09872
46190050	JENKINS, TIMOTH	03/25/2019	\$ 3,060.00	\$ 1,530.00	8 - Printed	10241976-6411
58190239	JONES SCHOOL SU	03/25/2019	\$ 603.75	\$ 603.75	8 - Printed	11149365-6411-08048
58190238	JOSTENS INC	03/25/2019	\$ 9,500.00	\$ 171.25	8 - Printed	11149365-6411-08048
63190316	JOURNEY EDUCATI	03/25/2019	\$ 999.16	\$ -	0 - Closed	10221346-6412 *
63190305	KAJEET, INC	03/07/2019	\$ 524.85	\$ -	0 - Closed	10235290-6361
54190192	KAP7 INTERNATIO	03/11/2019	\$ 1,456.95	\$ 1,456.95	8 - Printed	11149334-6411-09816
73190093	KELLY PRESS	03/14/2019	\$ 750.00	\$ -	0 - Closed	11149156-6411-08363
73190094	KELLY PRESS	03/14/2019	\$ 750.00	\$ -	0 - Closed	11149156-6411-08363
73190095	KELLY PRESS	03/14/2019	\$ 750.00	\$ -	0 - Closed	11149156-6411-08363
73190096	KELLY PRESS	03/25/2019	\$ 750.00	\$ -	0 - Closed	11149156-6411-08363
73190098	KELLY PRESS	03/29/2019	\$ 12,000.00	\$ -	0 - Closed	11149156-6411-08363
85190363	KIESEL COMPANY	03/19/2019	\$ 3,654.07	\$ -	0 - Closed	10255AJS-6486
62190417	LOGIC SYSTEMS S	03/11/2019	\$ 3,496.00	\$ -	0 - Closed	10111318-6339 *
40190034	MAKERBOT INDUST	03/27/2019	\$ 2,831.42	\$ 2,831.42	8 - Printed	11149013-6412-08200
58190234	MCGINNIS, MIKE	03/25/2019	\$ 500.00	\$ 500.00	8 - Printed	11149385-6411-09816
85190373	MEADOWS MACHINE	03/29/2019	\$ 2,950.00	\$ 2,950.00	8 - Printed	40255025-6541
85190368	MECHANICAL SUPP	03/25/2019	\$ 2,112.00	\$ 2,112.00	8 - Printed	102550E0-6411
97190141	MERCY CORPORATE	03/14/2019	\$ 2,500.00	\$ 1,502.86	8 - Printed	10255709-6319
85190352	MILFORD SUPPLY	03/07/2019	\$ 816.50	\$ -	0 - Closed	1024100J-6411 *
85190364	MILFORD SUPPLY	03/19/2019	\$ 3,096.60	\$ 3,096.60	8 - Printed	102550DX-6411
85190353	MISSOURI FILTER	03/07/2019	\$ 3,100.00	\$ -	0 - Closed	40255023-6541
62190431	MISSOURI S&T AR	03/20/2019	\$ 1,250.00	\$ -	0 - Closed	10138217-6319-33200
85190370	MOTOR CONTROL S	04/01/2019	\$ 2,650.00	\$ 2,650.00	8 - Printed	102550DX-6411
85190365	MPGTANDEM	03/19/2019	\$ 762.50	\$ 762.50	8 - Printed	10255AJP-6411
73190097	MSHSAA	03/25/2019	\$ 3,469.00	\$ -	0 - Closed	11149240-6391-09664
54190202	MU ALPHA THETA	03/25/2019	\$ 530.00	\$ 530.00	8 - Printed	11149012-6371-08416
56190212	MU ALPHA THETA	03/25/2019	\$ 662.00	\$ 662.00	8 - Printed	11149342-6411-08416



PO#	Vendor Name	PO Date	Order Amount	Balance	Status	1st GL Account
62190418	MUSO, PETER	03/11/2019	\$ 837.98	\$ -	0 - Closed	10228103-6319-02160
97190144	MYBRANDPROMO IN	03/29/2019	\$ 1,500.00	\$ 1,500.00	8 - Printed	11149039-6411-09208
1190043	NASCO	03/06/2019	\$ 533.68	\$ 105.36	8 - Printed	10111497-6411-94020
74190015	NATL BOARD/PROF	03/08/2019	\$ 625.00	\$ -	0 - Closed	10223078-6319
62190432	NAVY LEAGUE OF	03/20/2019	\$ 2,850.00	\$ -	0 - Closed	10138371-6412-42701
92190023	NEW READERS PRE	03/11/2019	\$ 1,680.13	\$ 1,680.13	8 - Printed	10162710-6431-02001
62190429	NOCTI	03/20/2019	\$ 792.00	\$ -	0 - Closed	10138383-6391-42701
62190428	NOCTI	03/20/2019	\$ 1,661.00	\$ -	0 - Closed	10138387-6391-42701
62190430	NOCTI	03/20/2019	\$ 1,705.00	\$ -	0 - Closed	10138391-6391-42701
9190047	NORFOLK, BOBBY	03/05/2019	\$ 575.00	\$ -	0 - Closed	10221269-6319
92190021	OFFICE ESSENTIA	03/11/2019	\$ 1,000.00	\$ 112.37	8 - Printed	10162014-6411-02001
92190022	OFFICE ESSENTIA	03/11/2019	\$ 1,000.00	\$ 154.24	8 - Printed	10162014-6411-02001
45190024	OFFICE ESSENTIA	03/05/2019	\$ 3,111.89	\$ -	0 - Closed	10111AZT-6411
45190023	OFFICE ESSENTIA	03/01/2019	\$ 3,809.88	\$ -	0 - Closed	10111AZT-6411
62190443	OFFICE ESSENTIA	03/25/2019	\$ 3,878.27	\$ 3,878.27	8 - Printed	10223235-6411
85190369	OFFICE ESSENTIA	03/27/2019	\$ 5,104.44	\$ 5,104.44	8 - Printed	102550JF-6411-00999
62190425	OFFICE ESSENTIA	03/19/2019	\$ 5,930.42	\$ 5,930.42	8 - Printed	10223235-6411
97190140	OFFICE ESSENTIA	03/14/2019	\$ 7,432.96	\$ 7,432.96	8 - Printed	10051340-6411
85190371	OFFICE ESSENTIA	03/29/2019	\$ 9,540.00	\$ 9,540.00	8 - Printed	102550KE-6332
85190358	OLDHAM CHEMICAL	03/13/2019	\$ 1,000.00	\$ 1,000.00	8 - Printed	102550EL-6411
39190023	OLDHAM CHEMICAL	03/29/2019	\$ 1,000.00	\$ 1,000.00	8 - Printed	102550SK-6411
54190189	PARKWAY SCHOOL	03/05/2019	\$ 1,100.00	\$ -	0 - Closed	11149317-6391-09672
62190413	PEARSON	03/08/2019	\$ 13,540.25	\$ 13,540.25	8 - Printed	10213056-6412
92190020	PEARSON EDUCATI	03/11/2019	\$ 741.02	\$ 741.02	8 - Printed	10162014-6431-02001
45190026	PS AND J PROFES	03/05/2019	\$ 2,600.00	\$ 1,800.00	8 - Printed	11149660-6398-09512
97190137	RABEN TIRE CO.	03/11/2019	\$ 14,000.00	\$ -	0 - Closed	10051430-6332
73190088	READY SUPPORT S	03/08/2019	\$ 2,500.00	\$ 2,500.00	8 - Printed	11149240-6391-09664
73190091	REFPAY TR DTD 7	03/11/2019	\$ 11,000.00	\$ 543.68	8 - Printed	10142110-6319
97190135	RUSH TRUCK CENT	03/07/2019	\$ 14,500.00	\$ 229.18	8 - Printed	10051410-6411
62190415	SAINT CHARLES C	03/11/2019	\$ 7,487.19	\$ 7,487.19	8 - Printed	10111318-6339 *
65190026	SAMWICHES INC.	03/11/2019	\$ 2,400.00	\$ -	0 - Closed	10213189-6411
50190141	SAMWICHES INC.	03/14/2019	\$ 2,450.00	\$ -	0 - Closed	11149309-6411-07527
4	SCHILLER'S IMAG	03/27/2019	\$ 4,520.00	\$ -	0 - Closed	40111052-6541
85190359	SCHILLER'S IMAG	03/13/2019	\$ 5,090.00	\$ 5,090.00	8 - Printed	10225400-6412-04604
45190028	SCHOLASTIC	03/27/2019	\$ 1,056.50	\$ -	0 - Closed	11149288-6411-08320
10190056	SCHOLASTIC	03/25/2019	\$ 2,515.77	\$ -	0 - Closed	11149191-6411-08312
43190057	SCHOLASTIC	03/05/2019	\$ 2,800.00	\$ -	0 - Closed	11149283-6411-08320
32190008	SCHOOL HEALTH C	03/11/2019	\$ 5,000.00	\$ 5,000.00	8 - Printed	10213119-6411
63190310	SITY COMMUNICAT	03/14/2019	\$ 650.00	\$ 650.00	8 - Printed	10235080-6337
63190319	SITY COMMUNICAT	03/29/2019	\$ 850.00	\$ 850.00	8 - Printed	10235080-6337
50190142	SNA SPORTS GROU	03/18/2019	\$ 504.00	\$ -	0 - Closed	10141230-6411
45190025	SOUND ON SITE A	03/05/2019	\$ 757.70	\$ -	0 - Closed	11149288-6411-08456
84190007	SPECIAL SCHOOL	03/11/2019	\$ 8,363.61	\$ -	0 - Closed	10122210-6311
62190419	SPRINGFIELD PUB	03/11/2019	\$ 2,550.00	\$ -	0 - Closed	10111397-6311 *
54190204	SSI FURNISHINGS	03/25/2019	\$ 2,546.00	\$ 2,546.00	8 - Printed	102410AY-6411
12190016	ST. LOUIS AMBUS	03/08/2019	\$ 1,630.00	\$ -	0 - Closed	11149203-6411-09786
5190037	ST. LOUIS CARDI	03/14/2019	\$ 4,650.00	\$ 4,650.00	8 - Printed	11149110-6411-07992
56190202	ST. LOUIS CARDI	03/08/2019	\$ 12,400.00	\$ -	0 - Closed	11149359-6411-07264
85190356	ST. LOUIS RECHA	03/11/2019	\$ 5,000.00	\$ 5,000.00	8 - Printed	102550FB-6332

PO#	Vendor Name	PO Date	Order Amount	Balance	Status	1st GL Account
12190015	ST. LOUIS SCIEN	03/08/2019	\$ 1,034.00	\$ -	0 - Closed	11149202-6398-09660
58190232	ST. LOUIS SPORT	03/11/2019	\$ 1,066.90	\$ -	0 - Closed	11149365-6411-08464
54190190	STAND STRONG US	03/11/2019	\$ 657.22	\$ -	0 - Closed	11149326-6398-09056
85190366	SUMMIT SUPPLY C	03/19/2019	\$ 1,847.00	\$ -	0 - Closed	10255AIT-6411
43190059	SWEETWATER SOUN	03/18/2019	\$ 1,227.99	\$ 1,227.99	8 - Printed	10241923-6411
85190374	TECHNOLOGY INTL	03/29/2019	\$ 6,488.00	\$ 6,488.00	8 - Printed	40255044-6521
54190213	TKO DJ'S	03/29/2019	\$ 599.00	\$ 599.00	8 - Printed	11149317-6391-09360
56190213	TOLEDO PHYSICAL	03/25/2019	\$ 876.33	\$ 876.33	8 - Printed	10111BMW-6411
56190203	TOLEDO PHYSICAL	03/08/2019	\$ 918.12	\$ -	0 - Closed	10111BMW-6411
97190136	TRUCK CENTERS I	03/11/2019	\$ 1,650.84	\$ -	0 - Closed	10051470-6332
54190209	VERITIV OPERATI	03/25/2019	\$ 1,025.10	\$ 1,025.10	8 - Printed	102410AY-6411
21190035	VIRCO MFG CORP	03/13/2019	\$ 589.40	\$ 589.40	8 - Printed	10111ANP-6411
58190240	VIRCO MFG CORP	03/25/2019	\$ 4,180.96	\$ 4,180.96	8 - Printed	10131285-6411
56190204	VIVIANO'S CHEST	03/08/2019	\$ 533.40	\$ -	0 - Closed	11149351-6411-07464
50190138	VIVIANO'S CHEST	03/05/2019	\$ 639.98	\$ 106.67	8 - Printed	11149309-6411-09208
97190138	WEBER CHEVROLET	03/11/2019	\$ 3,200.00	\$ 118.10	8 - Printed	10051410-6411
54190188	WEINHARDT PARTY	03/01/2019	\$ 2,355.00	\$ 2,355.00	8 - Printed	11149317-6339-09632
54190208	WEST HIGH PARE	03/25/2019	\$ 1,100.00	\$ -	0 - Closed	11149317-6391-09672
54190196	WINNING STREAK	03/11/2019	\$ 532.00	\$ -	0 - Closed	11149334-6411-09816
56190214	WINNING STREAK	03/25/2019	\$ 572.25	\$ 572.25	8 - Printed	11149359-6411-09608
58190233	WINNING STREAK	03/11/2019	\$ 582.15	\$ -	0 - Closed	11149385-6411-09600
54190205	WINNING STREAK	03/25/2019	\$ 616.00	\$ 616.00	8 - Printed	11149334-6411-08025
54190207	WINNING STREAK	03/25/2019	\$ 643.95	\$ -	0 - Closed	11149334-6411-07857
50190139	WINNING STREAK	03/08/2019	\$ 646.00	\$ -	0 - Closed	11149313-6411-07280
54190212	WINNING STREAK	03/29/2019	\$ 754.50	\$ 754.50	8 - Printed	11149334-6411-07264
54190206	WINNING STREAK	03/25/2019	\$ 1,261.00	\$ -	0 - Closed	11149334-6411-09600
73190087	WINNING STREAK	03/08/2019	\$ 4,144.80	\$ 4,144.80	8 - Printed	11149230-6411-09664
48190235	WOOD ENVIRONMEN	03/13/2019	\$ 10,000.00	\$ 10,000.00	8 - Printed	48406230-6521-00093
48190236	WOOD ENVIRONMEN	03/13/2019	\$ 10,000.00	\$ 10,000.00	8 - Printed	48406250-6521-00094
48190237	WOOD ENVIRONMEN	03/13/2019	\$ 10,000.00	\$ 10,000.00	8 - Printed	48406200-6521-00091
48190238	WOOD ENVIRONMEN	03/13/2019	\$ 10,000.00	\$ 10,000.00	8 - Printed	48406320-6521-00098
48190239	WOOD ENVIRONMEN	03/13/2019	\$ 10,000.00	\$ 10,000.00	8 - Printed	48406290-6521-00096
48190240	WOOD ENVIRONMEN	03/13/2019	\$ 10,000.00	\$ 10,000.00	8 - Printed	48406270-6521-00095
48190245	WOOD ENVIRONMEN	03/14/2019	\$ 10,000.00	\$ 10,000.00	8 - Printed	48406300-6521-00097
48190241	WSP USA INC	03/13/2019	\$ 10,000.00	\$ 10,000.00	8 - Printed	48406230-6521-00093
48190242	WSP USA INC	03/13/2019	\$ 10,000.00	\$ 10,000.00	8 - Printed	48406250-6521-00094
48190243	WSP USA INC	03/13/2019	\$ 10,000.00	\$ 10,000.00	8 - Printed	48406180-6521-00090
48190244	WSP USA INC	03/13/2019	\$ 10,000.00	\$ 10,000.00	8 - Printed	48406300-6521-00097
59190005	YMCA-FOUR RIVER	03/07/2019	\$ 1,100.00	\$ -	0 - Closed	10241615-6391
<b>TOTAL:</b>			<b>\$ 626,168.45</b>			

**\$15,000+**  
**March FY19**

<b>PO#</b>	<b>Vendor Name</b>	<b>PO Date</b>	<b>Order Amount</b>	<b>Balance</b>	<b>Status</b>	<b>1st GL Account</b>
85190357	DJM ECOLOGICAL	03/13/2019	\$ 15,967.00	\$ 15,967.00	8 - Printed	102550IR-6312
71190019	LIPICS INC	03/27/2019	\$ 16,000.00	\$ 16,000.00	8 - Printed	10234235-6411
97190142	ENERGY PETROLEU	03/27/2019	\$ 16,997.55	\$ -	0 - Closed	10051380-6486
97190139	ENERGY PETROLEU	03/14/2019	\$ 17,222.55	\$ -	0 - Closed	10051380-6486
97190133	ENERGY PETROLEU	03/05/2019	\$ 17,466.30	\$ -	0 - Closed	10051380-6486
62190426	OFFICE ESSENTIA	03/19/2019	\$ 17,918.75	\$ 17,918.75	8 - Printed	10223235-6411
72190015	YMCA TROUT LODG	03/18/2019	\$ 18,280.00	\$ 18,280.00	8 - Printed	10111152-6398
73190089	EDUCATIONPLUS	03/11/2019	\$ 19,500.00	\$ 19,500.00	8 - Printed	10142190-6391
54190203	VARSITY SPIRIT	03/25/2019	\$ 20,000.00	\$ 20,000.00	8 - Printed	11149321-6411-07464
73190090	GREATER ST. LOU	03/11/2019	\$ 24,200.00	\$ 761.00	8 - Printed	10142110-6319
48190229	DUCT SYSTEMS,IN	03/13/2019	\$ 32,285.00	\$ 32,285.00	8 - Printed	40255044-6521
74190016	SOLUTION TREE L	03/11/2019	\$ 34,600.00	\$ 34,600.00	8 - Printed	10228098-6312-02105
50190144	COLLEGE BOARD-M	03/27/2019	\$ 59,000.00	\$ 59,000.00	8 - Printed	11149308-6411-09624
85190372	JOHN KALICAK CO	03/29/2019	\$ 139,726.00	\$ 139,726.00	8 - Printed	40255044-6521-00791
48190250	WIRED TECHNOLOG	03/25/2019	\$ 169,284.00	\$ 169,284.00	8 - Printed	48406050-6541-00083
63190306	TYLER TECHNOLOG	03/07/2019	\$ 181,605.63	\$ -	0 - Closed	10235150-6412
63190317	AOS-ALEXANDER O	03/27/2019	\$ 254,210.36	\$ 254,210.36	8 - Printed	40406150-6543-00088
63190314	SPEARTIP LLC	03/22/2019	\$ 345,866.00	\$ -	0 - Closed	10-1705 *
48190249	MCCARTHY HOLDIN	03/25/2019	\$ 349,300.00	\$ 349,300.00	8 - Printed	48406370-6521-00109
48190228	BRADY CONSTRUCT	03/11/2019	\$ 727,000.00	\$ 711,979.00	8 - Printed	48406040-6521-00080
63190313	AOS-ALEXANDER O	03/22/2019	\$ 1,400,217.75	\$ 1,400,217.75	8 - Printed	48236010-6543-00107
48190253	TRANE U.S. INC	03/27/2019	\$ 2,443,524.00	\$ 2,443,524.00	8 - Printed	48406360-6521-00100
48190248	ICS CONSTRUCTIO	03/25/2019	\$ 6,892,000.00	\$ 6,892,000.00	8 - Printed	48406020-6521-00077
<b>TOTAL:</b>			<b>\$ 13,212,170.89</b>			

**SPOT MARKET REPORT - February 2019**

Purchase Order #	Date	Vendor #	Vendor Name	Comm. Code	QTY	UOM	Unit Price	Description	Object	Account Amt
61190001	07/05/18	631777	COSTCO	202				8.5 x 11 WHITE COPY PAPER - 30% RECYCLED PAPER - GP SPECTRUM	1615	\$ 24,981.60
61190012	08/15/18	809084	OFFICE ESSENTIALS INCORPORATED	202				8.5 x 11 WHITE COPY PAPER - 30% RECYCLED PAPER - UNIVERSAL	1615	\$ 25,620.00
61190016	09/14/18	809084	OFFICE ESSENTIALS INCORPORATED	202				8.5 x 11 WHITE COPY PAPER - 30% RECYCLED PAPER - UNIVERSAL	1615	\$ 26,796.00
61190018	10/15/18	622854	CONTRACT PAPER GROUP, INC	202				8.5 x 11 WHITE COPY PAPER - 30% RECYCLED PAPER - GEORGIA PACIFIC SPECTRUM	1615	\$ 26,787.60
61190023	12/20/18	632285	DUTCH HOLLOW SERVICES & SUPPLIES INC.	202				8.5 x 11 WHITE COPY PAPER - 30% RECYCLED PAPER - UNIVERSAL #20030	1615	\$ 26,644.80
61190024	02/08/2019	632285	DUTCH HOLLOW SERVICES & SUPPLIES INC.	202				8.5 x 11 WHITE COPY PAPER - 30% RECYCLED PAPER - UNIVERSAL #20030	1615	\$ 26,644.80
85190141	07/31/18	615999	FROESEL OIL CO, INC	400	204	EACH	\$ 2.25	RFG REG UNLEADED	6486	\$ 458.80
85190141					410	EACH	\$ 2.36	ULS #2 DIESEL	6486	\$ 966.78
85190141					1	EACH	\$ 301.44	STATE AND FEDERAL TAXES AND FEES	6486	\$ 301.44
85190141					1097	EACH	\$ 2.25	RFG REG UNLEADED	6486	\$ 2,467.15
85190171	08/17/18	615999	FROESEL OIL CO, INC	400	591	EACH	\$ 2.12	RFG REG UNLEADED	6486	\$ 1,251.74
85190171					384	EACH	\$ 2.23	ULS #2 DIESEL	6486	\$ 855.94

85190171					1	EACH	\$	222.88	STATE AND FEDERAL TAXES AND FEES			
85190171										6486	\$	222.88
85190171					250	EACH	\$	2.12	RFG REG UNLEADED			
85190171										6486	\$	529.50
85190171					40	EACH	\$	2.23	ULS#2 DIESEL			
85190171										6486	\$	89.16
85190194	08/28/18	615999	FROESEL OIL CO, INC	400								
85190194					1570	EACH	\$	2.16	RFG REG UNLEADED			
85190194										6486	\$	3,388.06
85190194					330	EACH	\$	2.24	ULS #2 DIESEL			
85190194										6486	\$	738.87
85190194					1	EACH	\$	410.61	STATE AND FEDERAL TAXES AND FEES			
85190194										6486	\$	410.61
85190194					431	EACH	\$	2.16	RFG REG UNLEADED			
85190194										6486	\$	930.10
85190199	09/04/18	615999	FROESEL OIL CO, INC	400								
85190199					1650	EACH	\$	2.13	RFG REG UNLEADED			
85190199										6486	\$	3,512.69
85190199					375	EACH	\$	2.25	ULS #2 DIESEL			
85190199										6486	\$	844.76
85190199					1	EACH	\$	435.98	STATE AND FEDERAL TAXES AND FEES			
85190199										6486	\$	435.98
85190199					450	EACH	\$	2.13	RFG REG UNLEADED			
85190199										6486	\$	958.01
85190218	09/12/18	615999	FROESEL OIL CO, INC	400								
85190218					1773	EACH	\$	2.04	RFG REG UNLEADED			
85190218										6486	\$	3,624.01
85190218					340	EACH	\$	2.34	ULS #2 DIESEL			
85190218										6486	\$	794.92
85190218					1	EACH	\$	447.15	STATE AND FEDERAL TAXES AND FEES			
85190218										6486	\$	447.15
85190218					430	EACH	\$	2.04	RFG REG UNLEADED			
85190218										6486	\$	878.92
85190231	09/25/18	615999	FROESEL OIL CO, INC	400								
85190231					1299	EACH	\$	2.10	RFG REG UNLEADED			
85190231										6486	\$	2,726.60
85190231					342	EACH	\$	2.39	ULS #2 DIESEL			
85190231										6486	\$	817.04
85190231					1	EACH	\$	359.89	STATE AND FEDERAL TAXES AND FEES			
85190231										6486	\$	359.89
85190231					402	EACH	\$	2.10	RFG REG UNLEADED			
85190231										6486	\$	843.80
85190240	10/10/18	615999	FROESEL OIL CO, INC	400								
85190240					1463	EACH	\$	2.18	RFG REG UNLEADED			
85190240										6486	\$	3,187.88
85190240					371	EACH	\$	2.44	ULS #2 DIESEL			
85190240										6486	\$	904.87
85190240					1	EACH	\$	398.81	STATE AND FEDERAL TAXES AND FEES			

85190240								6486	\$	398.81
85190240				430	EACH	\$	2.18 RFG REG UNLEADED			
85190240								6486	\$	936.97
85190265	11/08/18	642477	ENERGY PETROLEUM COMPANY	400						
85190265				1671.2	EACH	\$	2.13 NO LEAD 87 OCT RFG			
85190265								6486	\$	3,559.66
85190265				430.1	EACH	\$	2.13 NO LEAD 87 OCT RFG			
85190265								6486	\$	916.11
85190265				260	EACH	\$	2.55 #2 ULTRA LS DIESEL			
85190265								6486	\$	663.00
85190265				1	EACH	\$	294.34 FOR INVOICE 647834 FEDERAL AND STATE TAXES			
85190265								6486	\$	294.34
85190265				1	EACH	\$	75.76 FOR INVOICE 647836 FEDERAL AND STATE TAXES			
85190265								6486	\$	75.76
85190265				1	EACH	\$	45.85 FOR INVOICE 651276 FEDERAL AND STATE TAXES			
85190265								6486	\$	45.85
85190271	11/20/18	642477	ENERGY PETROLEUM COMPANY	400						
85190271				430	EACH	\$	1.96 NO LEAD 87 OCT RFG			
85190271								6486	\$	842.80
85190271				2270	EACH	\$	1.96 NO LEAD 87 OCT RFG			
85190271								6486	\$	4,449.20
85190271				230	EACH	\$	2.45 #2 ULTRA LS DIESEL			
85190271								6486	\$	563.50
85190271				1	EACH	\$	75.74 FOR INVOICE 647834 FEDERAL AND STATE TAXES			
85190271								6486	\$	75.74
85190271				1	EACH	\$	399.82 FOR INVOICE 647836 FEDERAL AND STATE TAXES			
85190271								6486	\$	399.82
85190271				1	EACH	\$	40.56 FOR INVOICE 651276 FEDERAL AND STATE TAXES			
85190271								6486	\$	40.56
85190283	12/06/18	642477	ENERGY PETROLEUM COMPANY	400						
85190283				425.1	EACH	\$	1.76 NO LEAD 87 OCT RFG			
85190283								6486	\$	748.18
85190283				1407.7	EACH	\$	1.73 NO LEAD 87 OCT RFG			
85190283								6486	\$	2,435.32
85190283				1	EACH	\$	74.88 FOR #6193473 FEDERAL AND STATE TAXES			
85190283								6486	\$	74.88
85190283				1	EACH	\$	247.94 FOR #6193474 FEDERAL AND STATE TAXES			
85190283								6486	\$	247.94

85190284	12/06/18	642477	ENERGY PETROLEUM COMPANY	400							
85190284					908	EACH	\$	1.74	NO LEAD 87 OCT RFG		
85190284										6486	\$ 1,579.92
85190284					290	EACH	\$	1.74	NO LEAD 87 OCT RFG		
85190284										6486	\$ 504.60
85190284					402	EACH	\$	2.32	#2 ULTRA PREM LS DIESEL		
85190284										6486	\$ 931.35
85190284					1	EACH	\$	159.93	FOR #1451221 FEDERAL AND STATE TAXES		
85190284										6486	\$ 159.93
85190284					1	EACH	\$	51.08	FOR #1451222 FEDERAL AND STATE TAXES		
85190284										6486	\$ 51.08
85190284					1	EACH	\$	70.89	FOR #1451220 FEDERAL AND STATE TAXES		
85190284										6486	\$ 70.89
85190301	01/14/19	642477	ENERGY PETROLEUM COMPANY	400							
85190301					420	EACH	\$	1.56	NO LEAD 87 OCT RFG		
85190301										6486	\$ 656.75
85190301					1370	EACH	\$	1.56	NO LEAD 87 OCT RFG		
85190301										6486	\$ 2,142.27
85190301					232	EACH	\$	1.93	#2 ULTRA LS DIESEL		
85190301										6486	\$ 447.76
85190301					1	EACH	\$	73.97	FOR 6196918 FEDERAL AND STATE TAXES		
85190301										6486	\$ 73.97
85190301					1	EACH	\$	40.91	FOR 61969201 FEDERAL AND STATE TAXES		
85190301										6486	\$ 40.91
85190301					1	EACH	\$	241.30	FOR 6196919 FEDERAL AND STATE TAXES		
85190301										6486	\$ 241.30
85190307	01/18/19	642477	ENERGY PETROLEUM COMPANY	400							
85190307					1561.1	EACH	\$	1.58	NO LEAD 87 OCT RFG		
85190307										6486	\$ 2,466.54
85190307					425	EACH	\$	1.58	NO LEAD 87 OCT RFG		
85190307										6486	\$ 671.50
85190307					1	EACH	\$	274.95	FOR 1451253 FEDERAL AND STATE TAXES		
85190307										6486	\$ 274.95
85190307					1	EACH	\$	74.86	FOR 1451252 FEDERAL AND STATE TAXES		
85190307										6486	\$ 74.86
85190313	02/01/2019	642477	ENERGY PETROLEUM COMPANY	400							
85190313					1485	EACH	\$	1.50	NO LEAD 87 OCT RFG		
85190313										6486	\$ 2,227.50
85190313					425	EACH	\$	1.50	NO LEAD 87 OCT RFG		
85190313										6486	\$ 637.50
85190313					1	EACH	\$	260.18	FOR 6202703 FEDERAL AND STATE TAXES		
85190313										6486	\$ 260.18
85190313					1	EACH	\$	74.47	FOR 6202702 FEDERAL AND STATE TAXES		
85190313										6486	\$ 74.47

85190333	02/20/2019	800559	KIESEL COMPANY	400								
85190333					356.6	EACH	\$	1.59	87 OCT 10% ETHANOL BLEND GASOLINE			
85190333										6486	\$	566.99
85190333					750.6	EACH	\$	1.59	87 OCT 10% ETHANOL BLEND GASOLINE			
85190333										6486	\$	1,193.45
			ENERGY PETROLEUM									
85190338	02/21/2019	642477	COMPANY	400								
85190338					335	EACH	\$	1.54	NO LEAD 87 OCT RFG			
85190338										6486	\$	515.90
85190338					793	EACH	\$	1.54	NO LEAD 87 OCT RFG			
85190338										6486	\$	1,221.22
85190338					1	EACH	\$	58.69	FOR 30643384 FEDERAL AND STATE TAXES			
85190338										6486	\$	58.69
85190338					1	EACH	\$	138.94	FOR 1454821 FEDERAL AND STATE TAXES			
85190338										6486	\$	138.94
85190338					793	EACH	\$	1.68	#2 ULTRA PREM LSD (SEASONAL)			
85190338										6486	\$	1,332.24
85190338					1	EACH	\$	72.96	FOR 30643385 FEDERAL AND STATE TAXES			
85190338										6486	\$	72.96
85190345	02/22/2019	626035	HOME SERVICE OIL CO INC	400								
85190345					2583.5	EACH	\$	1.64	RFG 87 OCT UNL REG - 1904500606			
85190345										6486	\$	4,236.94
85190345					401	EACH	\$	1.64	RFG 87 OCT UNL REG - 543427			
85190345										6486	\$	657.64
85190345					22.8	EACH	\$	1.64	RFG 87 OCT UNL REG - 1904500607			
85190345										6486	\$	37.39
									STATE AND FEDERAL TAXES AND FEES -			
85190345					1	EACH	\$	452.63	1904500607			
85190345										6486	\$	452.63
85190345					1	EACH	\$	70.25	STATE AND FEDERAL TAXES AND FEES - 543427			
85190345										6486	\$	70.25
									STATE AND FEDERAL TAXES AND FEES -			
85190345					1	EACH	\$	4.00	1904500607			
85190345										6486	\$	4.00
			ENERGY PETROLEUM									
85190348	02/22/2019	642477	COMPANY	400								
85190348					309.1	EACH	\$	1.63	NO LEAD 87 OCT RFG - 6206685			
85190348										6486	\$	503.83
85190348					1	EACH	\$	54.16	FOR 6206685 FEDERAL AND STATE TAXES			
85190348										6486	\$	54.16
85190348					1	EACH	\$	69.66	FOR 6206686 FEDERAL AND STATE TAXES			
85190348										6486	\$	69.66
85190348					397.6	EACH	\$	2.08	#2 ULTRA PREM LSD (SEASONAL) - 6206686			
85190348										6486	\$	827.01
85190362	03/19/2019	642477	ENERGY PETROLEUM COMPAN	400								
85190362					1050	EACH		1.78000	NO LEAD 87 OCT RFG			
85190362										6486		1,869.00



85190362				425	EACH		1.78000 NO LEAD 87 OCT RFG			
85190362								6486		756.50
85190362				1	EACH		183.97000 FOR 30643384 FEDERAL AND STATE TAXES			
85190362								6486		183.97
85190362				1	EACH		74.47000 FOR 1454821 FEDERAL AND STATE TAXES			
85190362								6486		74.47
85190362				350	EACH		2.18760 #2 ULTRA PREM LSD (SEASONAL)			
85190362								6486		765.66
85190362				1	EACH		61.33000 FOR 30643385 FEDERAL AND STATE TAXES			
85190362								6486		61.33
85190363	03/19/2019	800559	KIESEL COMPANY	400						
85190363				1080.1	EACH		1.90000 87 OCT 10% ETHANOL BLEND GASOLINE			
85190363								6486		2,052.19
85190363				404.8	EACH		1.90000 87 OCT 10% ETHANOL BLEND GASOLINE			
85190363								6486		769.12
85190363				200.3	EACH		2.28000 #2 CLEAR ULS DIESEL			
85190363								6486		456.68
85190363				1	EACH		376.08000 STATE AND FEDERAL TAXES AND FEES			
85190363								6486		376.08
97190059	09/12/18	615999	FROESEL OIL CO, INC	500						
							CONVENIENT PURCHASE ORDER FOR THE PURCHASE OF PREMIUM ULTRA LOW SULFUR #2 DIESEL FUEL FOR SCHOOL BUSES. BID #19P-30			
97190059				7500	EACH	\$	2.33			
97190059								6486	\$	17,467.50
97190059				7500	EACH	\$	0.00 FEDERAL OIL SPILL FEE			
97190059								6486	\$	16.05
97190059				7500	EACH	\$	0.00 MO AGI TAX PER GAL			
97190059								6486	\$	7.50
97190059				7500	EACH	\$	0.17 MO STATE TAX PER GAL			
97190059								6486	\$	1,275.00
97190059				7500	EACH	\$	- FED SUPER FUND TAX PER GAL EXTRA			
97190059								6486	\$	-
97190059				7500	EACH	\$	0.00 MO ADG INSPECTION FEE TAX PER GAL			
97190059								6486	\$	5.25
97190059				7500	EACH	\$	0.00 MO USTD TRANSP LOAD FEE TAX PER GAL			
97190059								6486	\$	18.75
97190063	09/26/18	800559	KIESEL COMPANY	500						
							7000 GALLONS OF PREMIUM ULTRA LOW SULFUR #2 DIESEL FUEL FOR SCHOOL BUSES.			
97190063				7000	EACH	\$	2.32			
97190063								6486	\$	16,240.00
97190063				7000	EACH	\$	0.00 FED. OIL SPILL FEE			
97190063								6486	\$	14.98
97190063				7000	EACH	\$	0.00 MO AGI TAX PER GAL EXTRA			
97190063								6486	\$	7.00
97190063				7000	EACH	\$	0.17 MO STATE TAX PER GAL			
97190063								6486	\$	1,190.00

97190063				7000	EACH	\$	0.00	MO ADG INSP FEE TAX PER GAL			
97190063									6486	\$	4.90
97190063				7000	EACH	\$	0.00	MO USTD TRANSP. LOAD FEE TAX PER GAL			
97190063									6486	\$	17.50
97190066	10/02/18	615999	FROESEL OIL CO, INC	500							
								PREMIUM, ULTRA LOW SULFUR, #2 DIESEL FUEL.			
97190066				8000	EACH	\$	2.35	BID #19P-39			
97190066									6486	\$	18,792.00
97190066				8000	EACH	\$	0.00	FED OIL SPILL FEE			
97190066									6486	\$	17.12
97190066				8000	EACH	\$	0.00	MO AGI TAX PER GAL. EXTRA			
97190066									6486	\$	8.00
97190066				8000	EACH	\$	0.17	MO STATE TAX PER GAL			
97190066									6486	\$	1,360.00
97190066				8000	EACH	\$	0.00	MO ADG INSP FEE TAX PER GAL			
97190066									6486	\$	5.60
97190066				8000	EACH	\$	0.00	MO USTD TRANSP. LOAD FEE TAX PER GAL			
97190066									6486	\$	20.00
97190070	10/10/18	800559	KIESEL COMPANY	500							
								PREMIUM ULTRA LOW SULFUR, #2 DIESEL FUEL			
97190070				7350	EACH	\$	2.50	FOR SCHOOL BUSES. BID #19P-41			
97190070									6486	\$	18,367.65
97190070				7350	EACH	\$	0.00	FED OIL SPILL FEE			
97190070									6486	\$	15.73
97190070				7350	EACH	\$	0.00	MO. AGI TAX PER GALLON EXTRA			
97190070									6486	\$	7.35
97190070				7350	EACH	\$	-	FED SUPER FUND TAX PER GALLON EXTRA			
97190070									6486	\$	-
97190070				7350	EACH	\$	0.17	MO STATE TAX PER GALLON			
97190070									6486	\$	1,249.50
97190070				7350	EACH	\$	0.00	MO. ADG INSP. FEE TAX PER GALLON			
97190070									6486	\$	5.15
97190070				7350	EACH	\$	0.00	MO USTD TRANSP. LOAD FEE TAX PER GALLON			
97190070									6486	\$	18.38
97190073	10/22/18	800559	KIESEL COMPANY	500							
								PREMIUM ULTRA LOW SULFUR, #2 DIESEL FUEL			
97190073				7350	EACH	\$	2.48	FOR SCHOOL BUSES, BID #19P-45			
97190073									6486	\$	18,228.00
97190073				7350	EACH	\$	0.00	FED OIL SPILL FEE			
97190073									6486	\$	15.73
97190073				7350	EACH	\$	0.00	MO AGI TAX PER GAL EXTRA			
97190073									6486	\$	7.35
97190073				7350	EACH	\$	-	FED SUPER FUND TAX PER GAL EXTRA			
97190073									6486	\$	-
97190073				7350	EACH	\$	0.17	MO STATE TAX PER GAL			
97190073									6486	\$	1,249.50
97190073				7350	EACH	\$	0.00	MO ADG INSP FEE TAX PER GAL			

97190073								6486	\$	5.15
97190073				7350	EACH	\$	0.00	MO USTD TRANSP LOAD FEE TAX PER GAL		
97190073								6486	\$	18.38
97190081	11/01/18	800559	KIESEL COMPANY	500						
97190081				7350	EACH	\$	2.34	PREMIUM ULTRA LOW SULFUR, #2 DIESEL FUEL FOR SCHOOL BUSES, BID #19P-52		
97190081								6486	\$	17,191.65
97190081				7350	EACH	\$	0.00	FED OIL SPILL FEE		
97190081								6486	\$	15.73
97190081				7350	EACH	\$	0.00	MO AGI TAX PER GAL EXTRA		
97190081								6486	\$	7.35
97190081				7350	EACH	\$	-	FED SUPER FUND TAX PER GAL EXTRA		
97190081								6486	\$	-
97190081				7350	EACH	\$	0.17	MO STATE TAX PER GAL		
97190081								6486	\$	1,249.50
97190081				7350	EACH	\$	0.00	MO ADG INSP FEE TAX PER GAL		
97190081								6486	\$	5.15
97190081				7350	EACH	\$	0.00	MO USTD TRANSP LOAD FEE TAX PER GAL		
97190081								6486	\$	18.38
			ENERGY PETROLEUM COMPANY							
97190086	11/20/18	642477	COMPANY	500						
97190086				7500	EACH	\$	2.31	PREMIUM ULTRA LOW SULFUR, #2 DIESEL FOR SCHOOL BUSES, BID #19P-55		
97190086								6486	\$	17,325.00
97190086				7500	EACH	\$	0.00	FED OIL SPILL FEE		
97190086								6486	\$	16.05
97190086				7500	EACH	\$	0.00	MO AGI TAX PER GAL EXTRA		
97190086								6486	\$	7.50
97190086				7500	EACH	\$	0.17	MO STATE TAX PER GAL		
97190086								6486	\$	1,275.00
97190086				7500	EACH	\$	0.00	MO ADG INSP. FEE TAX PER GAL		
97190086								6486	\$	5.25
97190086				7500	EACH	\$	0.00	MO USTD TRANSP LOAD FEE TAX PER GAL		
97190086								6486	\$	18.75
			ENERGY PETROLEUM COMPANY							
97190091	11/26/18	642477	COMPANY	500						
97190091				7500	EACH	\$	2.17	7500 GALLONS OF FUEL FOR SCHOOL BUSES. BID #19P-59		
97190091								6486	\$	16,261.50
97190091				7500	EACH	\$	0.00	FED. OIL SPILL FEE		
97190091								6486	\$	16.05
97190091				7500	EACH	\$	0.00	MO. AGI TAX PER GALLON EXTRA		
97190091								6486	\$	7.50
97190091				7500	EACH	\$	-	FED SUPER FUND TAX PER GALLON EXTRA		
97190091								6486	\$	-
97190091				7500	EACH	\$	0.17	MO. STATE TAX PER GALLON		
97190091								6486	\$	1,275.00
97190091				7500	EACH	\$	0.00	MO. ADG INSP. FEE TAX PER GALLON		

97190091								6486	\$	5.25
97190091				7500	EACH	\$	0.00	MO. USTD TRANSP. LOAD FEE TAX PER GALLON		
97190091								6486	\$	18.75
97190098	12/10/18	642477	ENERGY PETROLEUM COMPANY	500						
97190098				7500	EACH	\$	1.87	DIESEL FUEL FOR SCHOOL BUSES BID #19P-66		
97190098								6486	\$	14,025.00
97190098				7500	EACH	\$	0.00	FED OIL SPILL FEE		
97190098								6486	\$	16.05
97190098				7500	EACH	\$	0.00	MO AGI TAX PER GAL EXTRA		
97190098								6486	\$	7.50
97190098				7500	EACH	\$	0.17	MO STATE TAX PER GAL		
97190098								6486	\$	1,275.00
97190098				7500	EACH	\$	0.00	MO ADG INSP FEE TAX PER GAL		
97190098								6486	\$	5.25
97190098				7500	EACH	\$	0.00	MO USTD TRANSP. LOAD FEE TAX PER GAL		
97190098								6486	\$	18.75
97190100	12/14/18	800559	KIESEL COMPANY	500						
97190100										
97190100				7300	EACH	\$	1.74	PREMIUM, ULTRA LOW SULFUR, #2 DIESEL FUEL FOR SCHOOL BUSES.		
97190100								6486	\$	12,698.35
97190100				7300	EACH	\$	0.00	FED OIL SPILL FEE		
97190100								6486	\$	15.62
97190100				7300	EACH	\$	0.00	MO AGI TAX PER GAL EXTRA		
97190100								6486	\$	7.30
97190100				7300	EACH	\$	0.17	MO STATE TAX PER GALLON		
97190100								6486	\$	1,241.00
97190100				7300	EACH	\$	0.00	MO ADG INSP FEE TAX PER GALLON		
97190100								6486	\$	5.11
97190100				7300	EACH	\$	0.00	MO USTD TRANSP LOAD FEE TAX PER GALLON		
97190100								6486	\$	18.25
97190104	01/16/19	642477	ENERGY PETROLEUM COMPANY	500						
97190104				7500	EACH	\$	1.50	PREMIUM, ULTRA LOW SULFUR #2 DIESEL		
97190104								6486	\$	11,212.50
97190104				7500	EACH	\$	0.00	FED OIL SPILL FEE		
97190104								6486	\$	16.05
97190104				7500	EACH	\$	0.00	MO AGI TAX PER GAL EXTRA		
97190104								6486	\$	7.50
97190104				7500	EACH	\$	0.17	MO STATE TAX PER GAL		
97190104								6486	\$	1,275.00
97190104				7500	EACH	\$	0.00	MO ADG INSP FEE TAX PER GAL		
97190104								6486	\$	5.25
97190104				7500	EACH	\$	0.00	MO USTD TRANSP LOAD FEE TAX PER GAL		
97190104								6486	\$	18.75

97190122	02/01/2019	626035	HOME SERVICE OIL CO INC	500								
97190122					7600	EACH	\$	1.68	PREMIUM ULTRA LOW SULFUR #2 DIESEL			
97190122										6486	\$	12,745.20
97190122					7600	EACH	\$	0.00	FED. OIL SPILL FEE			
97190122										6486	\$	16.26
97190122					7600	EACH	\$	0.00	MO.AGI TAX PER GAL. EXTRA			
97190122										6486	\$	7.60
97190122					7600	EACH	\$	0.17	MO.STATE TAX PER GAL.			
97190122										6486	\$	1,292.00
97190122					7600	EACH	\$	0.00	MO.ADG INSP. FEE TAX PER GAL.			
97190122										6486	\$	5.32
97190122					7600	EACH	\$	0.00	MO.USTD TRANSP. LOAD FEE TAX PER GAL.			
97190124	02/08/2019	626035	HOME SERVICE OIL CO INC	500						6486	\$	19.00
									PREMIUM ULTRA LOW SULFUR #2 DIESEL FUEL			
97190124					7600	EACH	\$	1.83	TREATED			
97190124										6486	\$	13,927.00
97190124					7600	EACH	\$	0.00	FED. OIL SPILL FEE			
97190124										6486	\$	16.26
97190124					7600	EACH	\$	0.00	MO. AGI TAX PER GAL . EXTRA			
97190124										6486	\$	7.60
97190124					7600	EACH	\$	0.17	MO. STATE TAX PER GAL.			
97190124										6486	\$	1,292.00
97190124					7600	EACH	\$	0.00	MO.ADG INSP. FEE TAX PER GAL.			
97190124										6486	\$	5.32
97190124					7600	EACH	\$	0.00	MO. USTD TANS. LOAD FEE TAX PER GAL.			
97190124										6486	\$	19.00
97190125	02/20/2019	626035	HOME SERVICE OIL CO INC	500								
									PREMIUM ULTRA LOW SULFUR #2 DIESEL FUEL			
97190125					7600	EACH	\$	1.96	TREATED			
97190125										6486	\$	14,896.00
97190125					7600	EACH	\$	0.00	FED. OIL SPILL FEE			
97190125										6486	\$	16.26
97190125					7600	EACH	\$	0.00	MO.AGI TAX PER GAL EXTRA			
97190125										6486	\$	7.60
97190125					7600	EACH	\$	0.17	MO.STATE TAX PER GAL			
97190125										6486	\$	1,292.00
97190125					7600	EACH	\$	0.00	MO ADG INSP. FEE TAX PER GAL			
97190125										6486	\$	5.32
97190125					7600	EACH	\$	0.00	MO USTD TRANSP. LOAD FEE TAX PER GAL			
97190125										6486	\$	19.00
			ENERGY PETROLEUM									
97190129	02/21/2019	642477	COMPANY	500								
									PREMIUM ULTRA LOW SULFUR #2 DIESEL FUEL			
97190129					7500	EACH	\$	1.98	TREATED			
97190129										6486	\$	14,812.50
97190129					1	EACH	\$	0.00	FED OIL SPILL FEE			
97190129										6486	\$	-

97190129				1	EACH	\$	0.00	MO. AGI TAX PER GAL. EXTRA			
97190129									6486	\$	-
97190129				1	EACH	\$	0.17	MO. STATE TAX PER GALLON			
97190129									6486	\$	0.17
97190129				1	EACH	\$	0.00	MO. ADG INSP. FEE TAX PER GAL.			
97190129									6486	\$	-
97190129				1	EACH	\$	0.00	MO. USTD TRANSP. LOAD FEE TAX PER GAL			
97190129									6486	\$	-
97190133	03/05/2019	642477	ENERGY PETROLEUM COMPAN 500								
97190133				7500	EACH		2.15250	PREMIUM, ULTRA LOW SULFUR #2 DIESEL FUEL TRE.			
97190133									6486		16,143.75
97190133				7500	EACH		0.00214	FED. OIL SPILL FEE			
97190133									6486		16.05
97190133				7500	EACH		0.00100	MO.AGI TAX PER GAL. EXTRA			
97190133									6486		7.50
97190133				7500	EACH		0.17000	MO.STATE TAX PER GAL			
97190133									6486		1,275.00
97190133				7500	EACH		0.00070	MO ADG INSP FEE TAX PER GAL			
97190133									6486		5.25
97190133				7500	EACH		0.00250	MO USTD TRANSP LOAD FE TAX PER GAL			
97190133									6486		18.75
97190139	03/14/2019	642477	ENERGY PETROLEUM COMPAN 500								
97190139				7500	EACH		2.12000	PREMIUM ULTRA LOW SULFUR #2 DIESEL FUEL TREA	6486		15,900.00
97190139				7500	EACH		0.00214	FED OIL SPILL FEE	6486		16.05
97190139				7500	EACH		0.00100	MO AGI TAX PER GAL EXTRA	6486		7.50
97190139				7500	EACH		0.17000	MO STATE TAX PER GAL	6486		1,275.00
97190139				7500	EACH		0.00070	MO ADG INSP. FEE TAX PER GAL	6486		5.25
97190139											
97190139				7500	EACH		0.00250	MO USTD TRANSP LOAD FEE TAX PER GAL	6486		18.75
97190142	03/27/2019	642477	ENERGY PETROLEUM COMPAN 500								
97190142				7500	EACH		2.09000	PREMIUM, ULTRA LOW SULFUR, #2 DIESEL FUEL TRE	6486		15,675.00
97190142											
97190142				7500	EACH		0.00214	FED OIL SPILL FEE	6486		16.05
97190142				7500	EACH		0.00100	MO AGI TAX PER GAL EXTRA	6486		7.50
97190142				7500	EACH		0.17000	MO STATE TAX PER GAL	6486		1,275.00
97190142				7500	EACH		0.00070	MO ADG INSP FEE TAX PER GAL	6486		5.25
97190142				7500	EACH		0.00250	MO USTD TRANSP LOAD FEE TAX PER GAL	6486		18.75
85190167	08/09/18	851946	NEW SYSTEM CARPET	401							
								TRASH CAN LINERS 40" X 48" - 16 MICRON HIGH DENSITY ONLY - CLEAR - START SEALED (250/CS) APPROX CASE WGT 21.6#			
85190167				400	EACH	\$	17.50	INTERPLAST/PITT #MR20283 MC	6411	\$	7,000.00
85190168	08/09/18	914674	UNIPAK CORP.	401							

85190168					100	EACH	\$	15.40	TRASH CAN LINERS 24" X 23" - 0.4 MIL LINEAR LOW DENSITY ONLY - CLEAR - STAR SEALED 1000/CS - APPROX CASE WGT 14.72#	6411	\$	1,540.00
85190176	08/17/18	800066	INDUSTRIAL SOAP CO	401								
85190176					400	EACH	\$	17.75	TRASH CAN LINERS 40" x 48" - 16 MICRON HIGH DENSITY ONLY - CLEAR - STAR SEALED (250/CS)	6411	\$	7,100.00
85190176									APPROX CASE WGT 21.6# PITT #MR40483MC			
85190232	09/25/18	914674	UNIPAK CORP.	401								
85190232					800	EACH	\$	9.59	TRASH CAN LINERS 33" X 39" - 1.3 MIL - LINEAR LOW DENSITY ONLY CLEAR - STAR SEALED - 100/CASE	6411	\$	7,672.00
85190232									APPROX CASE WT: 11# PER CASE			
85190258	10/31/18	914674	UNIPAK CORP.	401								
85190258					1000	EACH	\$	7.18	TRASH LINERS 40" X 48" - 16 MICRON HIGH DENSITY ONLY CLEAR - STAR SEALED - (100/CASE) APPROX 20# / CASE	6411	\$	7,180.00
85190320	02/06/2019	800066	INDUSTRIAL SOAP CO	401					UPC #40483			
85190320					400	EACH	\$	18.00	TRASH CAN LINERS 40" X 48" - 16 MICRON HIGH DENSITY ONLY - CLEAR STAR SEALED 250 BAGS/ CASE APPROX WGT 20# PER CASE #MR40483MC	6411	\$	7,200.00
81190034	08/08/18	840018	LIBERTY FRUIT COMPANY, INC.	700								
81190034					1	EACH	\$	20,000.00	BLANKET PO	6471	\$	20,000.00
81190044	11/19/18	913529	VACCARO & SONS PRODUCE	700								
81190044					1	EACH	\$	29,295.00	BLANKET PO	6471	\$	29,295.00
81190047	02/05/2019	913529	VACCARO & SONS PRODUCE	700								
81190047					1	EACH	\$	40,000.00	BLANKET PO	6471	\$	40,000.00
<b>Total Commodity 202 (Paper)</b>											\$	157,474.80
<b>Total Commodity 400 (Fuel - Facilities)</b>											\$	82,683.12
<b>Total Commodity 500 (Fuel - Transportation)</b>											\$	304,330.42
<b>Total Commodity 401 (Trash Liners)</b>											\$	37,692.00
<b>Total Commodity 700 (Produce)</b>											\$	89,295.00
<b>Grand Total All Commodity</b>											\$	671,475.34